

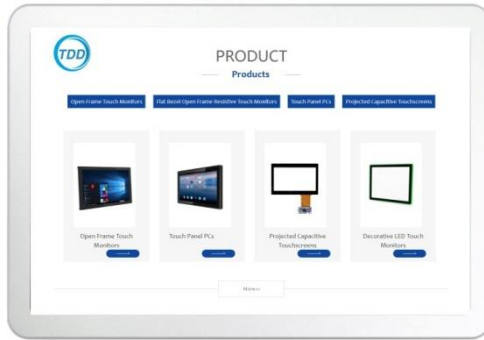


A Professional Manufacturer for Touchscreen & Display Products

Open Frame | Panel Mount | Closed Frame | Outdoor | Waterproof | Stainless Steel | Marine | Curved | Desktop | Commercial | Custom) Touch Monitors | Touch Panel PCs

Touch Panels | Touch Digital Signage | Touch POS Terminals

Windows Facing Displays | High Brightness TFT Displays | Industrial Box PCs | Custom Products | Accessories



Design Your Solution with TDD



Self-service



High Brightness

Outdoor Displays



Parking Payment Systems



Gaming



Industrial Automation Outdoor Control



Healthcare

TDD GROUP LIMITED

About Us

Located in Shenzhen, China, **TDD GROUP LIMITED** is a professional and high-tech manufacturer for touchscreen & display products and OED & ODM services. Specializing in design, development, sales and manufacturing of (**Open Frame | Panel Mount | Closed Frame | Outdoor | Waterproof | Stainless Steel | Marine | Curved | Desktop | Commercial | Custom**) **Touch Monitors | Touch Panel PCs | Touch Panels | Touch Digital Signage | Touch POS Terminals | Windows Facing Displays | High Brightness TFT Displays | Industrial Box PCs | Custom Products | Accessories**), **TDD GROUP LIMITED** provides OEM & ODM solutions for every imaginable application, including Self-service, High Brightness Outdoor Displays, Parking Payment Systems, Healthcare, Industrial Automation, Outdoor Control, Gaming and many others.

Working with business partners such as BOE, SAMSUNG, LG, AUO, Intel, Rockchip, Ampire, IVO and ILITEK etc., and with worldwide clients in different industries, our products include a broad selection of (**Open Frame | Panel Mount | Closed Frame | Outdoor | Waterproof | Stainless Steel | Marine | Curved | Desktop | Commercial | Custom**) **Touch Monitors | Touch Panel PCs** from 7-98". **TDD** has a creative talent pool in both engineering and management. In its engineering team, more than 85% employees have around 10 years' experience in the field of touchscreen products.

With skillful workers, professional assembly lines, large production capacity and high quality products, we **TDD** become a reliable partner for customers from all over the world. Our goal is to help you do your business better and become your favorite Touchscreen & Display products supplier by delivering on our promises. We measure our success based on your satisfaction. We want you to be a **TDD** customer for life.



TABLET OF CONTENTS

01 Touch Monitors

1.1-1.12 Standard | Industrial (Open Frame | Panel Mount | Closed Frame) | Outdoor | Waterproof | Stainless Steel | Marine | Curved | Desktop | Commercial (LED Framed| Digital Signage | Round | Bar Type) | Display Modules | Medical | Custom

02 Touch Panel PCs

2.1-2.5 Standard | Industrial (Open Frame | Panel Mount | Closed Frame) | Outdoor | Waterproof | Stainless Steel | Custom

03 Touch Panels

3.1-3.2 Standard | Custom

04 Touch Digital Signage

4.1-4.2 Standard | Wood Frame

05 Touch POS Terminals

5.1 Standard

06 Window Facing Displays

6.1-6.5 Wall Mounted | Single Sided Hanging / Floor Standing | Double Sided Floor Standing / Hanging

07 High Brightness TFT Displays

7.1-7.7 10.1-23.8" | 21.5-65" Open Frame | Optical Bonding | Solar Powered | Bar Type | Full Array Local Dimming | Ultra High Brightness | Custom

08 Industrial Box PCs

8.1-8.2 X86 | Android

09 Custom Products

9.1-9.6 HDMI TFT Displays | Smart Central Control Systems | MES Touch Panel PCs | Self Ordering Kiosks | Outdoor Digital Signage | Outdoor E-paper Displays

10 Accessories

10.1-10.2 Stands & Mounts | Peripherals

TDD-OFTM-BF|PM|PMS|CFxxx 7-43" **Standard** PCAP Touch Monitors



Bezel-free (Rear Mount)

Panel Mount

Slim Bezel Panel Mount

Closed Frame

Overview

The **TDD Touch Monitors** include **Standard, Industrial (Open Frame Bezel-free | Rear Mount, Panel Mount, Closed Frame), Outdoor, Waterproof, Stainless Steel, Marine, Curved, Desktop POS, Commercial Displays, Medical and Custom** types, delivers an industrial, reliable and cost-effective solution with outstanding image clarity & accurate touch response for OEMs & systems integrators. 7-98" sizes with rugged bezel, flat structure, high durability and versatility for Kiosks applications from Self-service, Automated Parking, Industrial Automation, Outdoor Control, Healthcare to Gaming.

Features

- Touch thru glass enabled with PCAP supports thickness up to 5mm
- Embedded design with **Steel Frame & Light Aluminum Back**
- IP65 (front) for water and dust protection, flexible mounting in any table, kiosk, or cabinet design

Specifications

Panel

Diagonal Size	7 - 43"(4:3 / 16:9 / 16:10), 17.78 - 109.22cm, Active matrix TFT LCD (LED)
Active Area (mm)	153.6 mm x 90 mm – 942.5 mm x 530.4 mm
Resolution	800 x 600 / 1024 x 600 / 1024 x 768 / 1280 x 800 / 1280 x 1024 / 1920 x 1080
Viewing Angle	Horizontal: 75 - 89° or 150 - 178° total / Vertical: 75 - 89° or 145 - 178° total
Number of Colors	16.7 million
Brightness (typical)	250 - 600 nits
Response Time-total	8 - 25 (Typ.)(Tr+Td) ms
Contrast Ratio	500:1 - 1200:1
Input Video Frequency	Horizontal: 30 - 60 KHz / Vertical: 50 - 75 Hz

Touch

Touch Technology	PCAP (Projected Capacitive) - 10 Touch Capacity
Surface Treatment	Water, Dust & Vandal proof; Optional: Anti-glare, Anti-fingerprint, Anti-smudge, Anti-bacterial
Supported OS	Windows / Android / Linux / Mac

Interfaces / Connectors / Controls

Video Interfaces	VGA x1 / HDMI x1 / DVI x1 (opt.) / Display Port x1 (opt.) / USB x1 for Touch; HDCP: Yes
Connectors & Controls	Audio Mini jack x1 / DC x1; 5 OSD buttons

Power Supply / Consumption: 100-240 VAC / 12VDC +/- 5%; 10 - 55W typical, 1.5W sleep, 0.5W off

Mechanical Product Dimension / Weight (Unpacked / Packed) / Box Dimensions: Subject to change
VESA Mounting: 75 x 75 / 100 x 100 / 200 x 300 / 300 x 300mm

Environmental Operating / Storage Temperature: -10°C to 50°C / -20°C to 60°C

Accessories Power adapter / cable, HDMI / VGA / Touch USB cable, flush/panel/wall mount brackets(opt.)

Others MTBF / Warranty / Enclosure Color: 50,000 hours demonstrated / 1-year / black | silver
Ready for Use: 24/7, **A** = Aluminum Back, **S** = Steel Back in above "**Mechanical**"

TDD-OFTM-BF|PM|CFxxxC

7-65" Industrial PCAP Touch Monitors



Bezel-free (Rear Mount)



Panel | Front Mount



Closed Frame

Overview

The **TDD Touch Monitors** include **Standard, Industrial (Open Frame Bezel-free | Rear Mount, Panel Mount, Closed Frame), Outdoor, Waterproof, Stainless Steel, Marine, Curved, Desktop POS, Commercial Displays, Medical and Custom** types, delivers an industrial, reliable and cost-effective solution with outstanding image clarity & accurate touch response for OEMs & systems integrators. 7-98" sizes with rugged bezel, flat structure, high durability and versatility for Kiosks applications from Self-service, Automated Parking, Industrial Automation, Outdoor Control, Healthcare to Gaming.

Features

- Touch thru glass enabled with PCAP supports thickness up to 5mm
- Embedded design with **Rugged TFT Panel, Sturdy Aluminum Front Frame & Steel Back**
- IP65 (front) for water and dust protection, flexible mounting in any table, kiosk, or cabinet design

Specifications

Panel

Diagonal Size	7 - 65"(4:3 / 16:9 / 16:10), 17.78 – 165.1cm, Active matrix TFT LCD (LED)
Active Area (mm)	216.96 mm x 135.6 mm - 1428.48 mm x 803.52 mm
Resolution	800 x 600 / 1024 x 600 / 1024 x 768 / 1280 x 800 / 1280 x 1024 / 1920 x 1080 / 3840 x 2160
Viewing Angle	Horizontal: 75 - 89° or 150 - 178° total / Vertical: 75 - 89° or 145 - 178° total
Number of Colors	16.7 million
Brightness (typical)	250 - 400 nits
Response Time-total	25 (Typ.)(Tr+Td) ms
Contrast Ratio	500 - 1200:1
Input Video Frequency	Horizontal: 30 - 60 KHz / Vertical: 50 - 75 Hz

Touch

Touch Technology	PCAP (Projected Capacitive) - 10 Touch Capacity
Surface Treatment	Water, Dust & Vandal proof; Optional: Anti-glare, Anti-fingerprint, Anti-smudge, Anti-bacterial
Supported OS	Windows / Android / Linux / Mac

Interfaces / Connectors / Controls

Video Interfaces	VGA x1 / HDMI x1 / DVI x1 (opt.) / Display Port x1 (opt.) / USB x1 for Touch; HDCP: Yes
Connectors & Controls	Audio Mini jack x1 / DC x1; 5 OSD buttons

Power

Supply / Consumption: 100-240 VAC / 12VDC +/- 5%; 10 - 180W typical, 1.5W sleep, 0.5W off

Mechanical

Product Dimension / Weight (Unpacked / Packed) / Box Dimensions: Subject to change
VESA Mounting: 75 x 75 / 100 x 100 / 200 x 300 / 300 x 300 / 400 x 400mm

Environmental

Operating / Storage Temperature: -10°C to 50°C / -20°C to 60°C

Accessories

Power adapter / cable, HDMI / VGA / Touch USB cable, flush/panel/wall mount brackets(opt.)

Others

MTBF / Warranty / Enclosure Color: 50,000 hours demonstrated / 1-year / black | silver
Ready for Use: 24/7

TDD-OFTM-BFxxxHO

7-65" Outdoor Bezel-free (Rear Mount) Open Frame PCAP Touch Monitors



Overview

The TDD Touch Monitors include Standard, Industrial (Open Frame Bezel-free | Rear Mount, Panel Mount, Closed Frame), Outdoor, Waterproof, Stainless Steel, Marine, Curved, Desktop POS, Commercial Displays, Medical and Custom types, delivers an industrial, reliable and cost-effective solution with outstanding image clarity & accurate touch response for OEMs & systems integrators. 7-98" sizes with rugged bezel, flat structure, high durability and versatility for Kiosks applications from Self-service, Automated Parking, Industrial Automation, Outdoor Control, Healthcare to Gaming.

Features

- Touch thru glass (with **AG, UV Filter & Anti-mist Optical Bonding**) enabled with PCAP supports thickness up to 5mm
- Embedded design with **Rugged High Bright TFT Panel&Auto-dimmer, Sturdy Aluminum Front Frame&Steel Back**
- IP65 (front) for water and **Dust Protection with Smart Fans**, flexible mounting in any table, kiosk, or cabinet design

Specifications

Panel

Diagonal Size	7 - 65"(4:3 / 16:9 / 16:10), 17.78 – 165.1cm, Active matrix TFT LCD (LED)
Active Area (mm)	216.96 mm x 135.6 mm - 1428.48 mm x 803.52 mm
Resolution	800 x 600 / 1024 x 600 / 1024 x 768 / 1280 x 800 / 1280 x 1024 / 1920 x 1080 / 3840 x 2160
Viewing Angle	Horizontal: 75 - 89° or 150 - 178° total / Vertical: 75 - 89° or 145 - 178° total
Number of Colors	16.7 million
Brightness (typical)	1000 - 2000 nits
Response Time-total	8 - 25 (Typ.)(Tr+Td) ms
Contrast Ratio	500:1 - 1200:1
Input Video Frequency	Horizontal: 30 - 60 KHz / Vertical: 50 - 75 Hz

Touch

Touch Technology	PCAP (Projected Capacitive) - 10 Touch Capacity (Optional: Waterproof Firmware)
Surface Treatment	Water, Dust & Vandal proof; Optional: Anti-glare, Anti-fingerprint, Anti-smudge, Anti-bacterial
Supported OS	Windows / Android / Linux / Mac

Interfaces / Connectors / Controls

Video Interfaces	VGA x1 / HDMI x1 / DVI x1 (opt.) / Display Port x1 (opt.) / USB x1 for Touch; HDCP: Yes
Connectors & Controls	Audio Mini jack x1 / DC x1; 5 OSD buttons

Power

Supply / Consumption: 100-240 VAC / 12VDC +/- 5%; 10-180W typical, 1.5W sleep, 0.5W off

Mechanical

Product Dimension / Weight (Unpacked / Packed) / Box Dimensions: Subject to change
VESA Mounting: 75 x 75 / 100 x 100 / 200 x 300 / 300 x 300 / 400 x 400mm

Environmental

Operating / Storage Temperature: **-20°C to 70°C** / -30°C to 80°C

Accessories

Power adapter / cable, HDMI / VGA / Touch USB cable, flush mount brackets w/screws (opt.)

Others

MTBF / Warranty / Enclosure Color: 50,000 hours demonstrated / 1-year / black | silver
Ready for Use: 24/7

TDD-PTM-PMxxxWP | TDD-PTM-CFxxxWPS

10.1-21.5" **Waterproof** PCAP Touch Monitors



Aluminum Panel Mount



Stainless Steel Closed Frame

Overview

The **TDD Touch Monitors** include **Standard, Industrial (Open Frame Bezel-free | Rear Mount, Panel Mount, Closed Frame), Outdoor, Waterproof, Stainless Steel, Marine, Curved, Desktop POS, Commercial Displays, Medical and Custom** types, delivers an industrial, reliable and cost-effective solution with outstanding image clarity & accurate touch response for OEMs & systems integrators. 7-98" sizes with rugged bezel, flat structure, high durability and versatility for Kiosks applications from Self-service, Automated Parking, Industrial Automation, Outdoor Control, Healthcare to Gaming.

Features

- Touch thru glass (with **Anti-mist Optical Bonding**) enabled with PCAP supports thickness up to 5mm
- Embedded design with **Rugged TFT Panel, Sturdy Aluminum or Anti-Corrosion 304 Stainless Steel Enclosure**
- **IP65 Fully Enclosed Fanless Design with M12 Metal I/O Connectors**, flexible mounting in any table, kiosk or cabinet

Specifications

Panel

Diagonal Size	10.1 - 21.5"(4:3 / 16:9 / 16:10), 17.78 - 109.22cm, Active matrix TFT LCD (LED)
Active Area (mm)	216.96 mm x 135.6 mm - 476.64 mm x 268.11 mm
Resolution	800 x 600 / 1024 x 600 / 1024 x 768 / 1280 x 800 / 1280 x 1024 / 1920 x 1080
Viewing Angle	Horizontal: 75 - 89° or 150 - 178° total / Vertical: 75 - 89° or 145 - 178° total
Number of Colors	16.7 million
Brightness (typical)	250 - 1000 nits
Response Time-total	8 - 25 (Typ.)(Tr+Td) ms
Contrast Ratio	500:1 - 1200:1
Input Video Frequency	Horizontal: 30 - 60 KHz / Vertical: 50 - 75 Hz

Touch

Touch Technology	PCAP (Projected Capacitive) - 10 Touch Capacity (Optional: Waterproof Firmware)
Surface Treatment	Water, Dust & Vandal proof; Optional: Anti-glare, Anti-fingerprint, Anti-smudge, Anti-bacterial
Supported OS	Windows / Android / Linux / Mac

Interfaces / Connectors / Controls

Video Interfaces	HDMI x1 / USB x1 for Touch; HDCP: Yes
Connectors & Controls	DC x1; Key x1 (5 External Connected OSD)

Power

Supply / Consumption: 100-240 VAC / 12VDC +/- 5%; 10 - 25W typical, 1.5W sleep, 0.5W off

Mechanical

Product Dimension / Weight (Unpacked / Packed) / Box Dimensions: Subject to change
VESA Mounting: 75 x 75 / 100 x 100 / 200 x 300 / 300 x 300mm

Environmental

Operating / Storage Temperature: **-20°C to 70°**

Accessories

Power adapter / cable, HDMI / VGA / Touch USB cable, panel / wall mount brackets (opt.)

Others

MTBF / Warranty / Enclosure Color: 50,000 hours demonstrated / 1-year / black | silver
Ready for Use: 24/7

TDD-PTM-CFxxxSS

15-21.5" **Stainless Steel** Closed Frame (Desktop / Wall Mount) PCAP Touch Monitors



Overview

The TDD Touch Monitors include **Standard, Industrial (Open Frame Bezel-free | Rear Mount, Panel Mount, Closed Frame), Outdoor, Waterproof, Stainless Steel, Marine, Curved, Desktop POS, Commercial Displays, Medical and Custom** types, delivers an industrial, reliable and cost-effective solution with outstanding image clarity & accurate touch response for OEMs & systems integrators. 7-98" sizes with rugged bezel, flat structure, high durability and versatility for Kiosks applications from Self-service, Automated Parking, Industrial Automation, Outdoor Control, Healthcare to Gaming.

Features

- Touch thru glass (with **Anti-mist Optical Bonding**) enabled with PCAP supports thickness up to 5mm, **IP65 (front)**
- Embedded design with **Rugged and Easy to Clean 304 Stainless Steel Enclosure & Full Metal Jacket**
- **Designed for kitchen with Liquid, grease & food resistant**, flexible mounting in any table, kiosk, or cabinet design

Specifications

Panel

Diagonal Size	15"(4:3)- 21.5"(16:9), 38-55cm, Active matrix TFT LCD (LED)
Active Area (mm)	305.1 mm x 229.1 mm - 476.64 mm x 268.11 mm
Resolution	1024 x 768 - 1920 x 1080
Viewing Angle	Horizontal: 89° or 178° total / Vertical: 89° or 178° total
Number of Colors	16.7 million
Brightness (typical)	250-350 nits
Response Time-total	17-30 (Typ.)(Tr+Td) ms
Contrast Ratio	1000:1
Input Video Frequency	Horizontal: 30 - 60 KHz / Vertical: 50 - 75 Hz

Touch

Touch Technology	PCAP (Projected Capacitive) - 10 Touch Capacity
Surface Treatment	Water, Dust & Vandal proof; Optional: Anti-glare, Anti-fingerprint, Anti-smudge, Anti-bacterial
Supported OS	Windows / Android / Linux / Mac

Interfaces / Connectors / Controls

Video Interfaces	VGA x1 / HDMI x1 / DVI x1 (opt.) / Display Port x1 (opt.) / USB x1 for Touch; HDCP: Yes
Connectors & Controls	Audio Mini jack x1 / DC x1; 5 OSD buttons

Power

Supply / Consumption: 100-240 VAC / 12VDC +/- 5%; 20W typical, 1.5W sleep, 0.5W off

Mechanical

Product Dimension / Weight (Unpacked / Packed) / Box Dimensions: Subject to change
VESA Mounting: 75 x 75 / 100 x 100mm

Environmental

Operating / Storage Temperature: -10°C to 50°C / -20°C to 60°C

Accessories

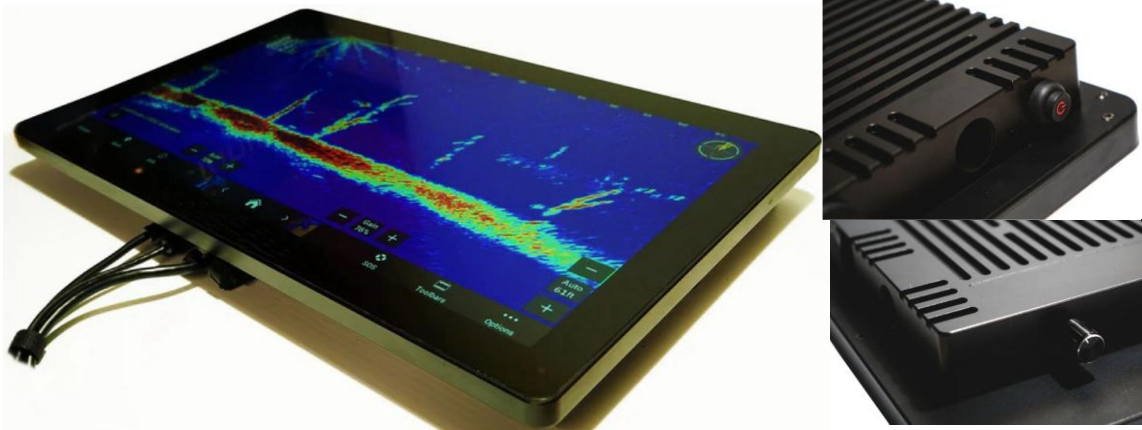
Power adapter / cable, HDMI / VGA / Touch USB cable, wall mount brackets w/screws (opt.)

Others

MTBF / Warranty / Enclosure Color: 50,000 hours demonstrated / 1-year / silver
Ready for Use: 24/7

TDD-PTM-CFxxxWPM

15.6-21.5" Marine Waterproof Closed Frame PCAP Touch Monitors



Overview

The TDD Touch Monitors include Standard, Industrial (Open Frame Bezel-free | Rear Mount, Panel Mount, Closed Frame), Outdoor, Waterproof, Stainless Steel, Marine, Curved, Desktop POS, Commercial Displays, Medical and Custom types, delivers an industrial, reliable and cost-effective solution with outstanding image clarity & accurate touch response for OEMs & systems integrators. 7-98" sizes with rugged bezel, flat structure, high durability and versatility for Kiosks applications from Self-service, Automated Parking, Industrial Automation, Outdoor Control, Healthcare to Gaming.

Features

- Touch thru glass (Sunlight Readable & Anti-mist Optical Bonding) enabled with PCAP supports thickness up to 5mm
- Embedded design with Rugged TFT Panel, Sturdy Aluminum Enclosure with bolting holes & gimbal side mount kit
- IP67 Fully Enclosed Fanless Design with M12 Metal I/O Connectors, flexible mounting in any table, kiosk or cabinet

Specifications

Panel

Diagonal Size	15.6 - 21.5" (4:3 / 16:9 / 16:10), 39.5 - 109.22cm, Active matrix TFT LCD (LED)
Active Area (mm)	344 mm x 194 mm - 477.6 mm x 269.1 mm
Resolution	800 x 600 / 1024 x 600 / 1024 x 768 / 1280 x 800 / 1280 x 1024 / 1920 x 1080
Viewing Angle	Horizontal: 75 - 89° or 150 - 178° total / Vertical: 75 - 89° or 145 - 178° total
Number of Colors	16.7 million
Brightness (typical)	1500 nits
Response Time-total	8 - 25 (Typ.) (Tr+Td) ms
Contrast Ratio	500:1 - 1200:1
Input Video Frequency	Horizontal: 30 - 60 KHz / Vertical: 50 - 75 Hz

Touch

Touch Technology	PCAP (Projected Capacitive) - 10 Touch Capacity (Optional: Waterproof Firmware)
Surface Treatment	Water, Dust & Vandal proof; Optional: Anti-glare, Anti-fingerprint, Anti-smudge, Anti-bacterial
Supported OS	Windows / Android / Linux / Mac

Interfaces / Connectors / Controls

Video Interfaces	HDMI x1 / USB x1 for Touch; HDCP: Yes
Connectors & Controls	DC x1; LAN x1 & Remote Control (for OSD); Brightness Knob x1; On and Off Button x1

Power

Supply / Consumption: 100-240 VAC / 12VDC +/- 5%; 20W typical, 1.5W sleep, 0.5W off

Mechanical

Product Dimension / Weight (Unpacked / Packed) / Box Dimensions: Subject to change
VESA Mounting: 75 x 75 / 100 x 100mm

Environmental

Operating / Storage Temperature: -20°C to 75°C (except for some models)

Accessories

Power adapter/cable(4m), HDMI/USB cable(8m) w/ type-c convert, gimbal mount kits (opt.)

Others

MTBF / Warranty / Enclosure Color: 50,000 hours demonstrated / 1-year / black | silver
Ready for Use: 24/7; Marine grade (moisture, salt spray & fungus proof for mainboard)

* TDD (www.tddtouch.com, sales@tddtouch.com) reserves the right to change specifications without prior notice. 08

TDD-PTM-CxxxC/J (A)

23.6-55" (Non-LED)

Framed C/J

Curved PCAP

Touch Monitors



Overview

The TDD curved touch monitors (VESA mount) with C-type / J-type format, Non-LED / LED Framed design and desktop / wall mount installation, which provides impressive visual experience with accurate touch response that is attractive and reliable especially for game players. It is available in a wide range of sizes (23.6" to 55"), offering the versatility in the area of gaming, casino and sports betting.

Features

- Touch (**optional for no touch**) thru glass enabled with PCAP **with Customized LED** Tiles for casino slot machines
- Comfortable Viewing Experience **with R1500 / R1800 Ratio and 2 / 2.5 /4K Resolution** with excellent image clarity
- Outstanding **Industrial-grade** design with **High-end Sturdy Steel / Aluminum Frame**

Specifications

Panel

Diagonal Size 23.6 - 55" (16:9), 59.944 – 139.7cm, Active matrix TFT LCD (LED)

Active Area (mm) 521.395 mm x 293.284mm - 1209.6 mm x 680.4mm

Resolution 1920 x 1080 / **2560 x 1440(2K QHD) / 3840 x 2160(4K UHD)**

Viewing Angle Horizontal: 89° or 178° total / Vertical: 89° or 178° total

Number of Colors 16.7 million

Brightness (typical) 300 - 500 nits

Response Time-total 8 - 10 (Typ.)(G to G) ms

Contrast Ratio 3000:1 - 4000:1

Touch

Touch Technology PCAP (Projected Capacitive) - 10 Touch Capacity

Surface Treatment Water, Dust & Vandal proof; **Optional:** Anti-glare, Anti-fingerprint, Anti-smudge, Anti-bacterial

Supported OS Windows / Android / Linux / Mac

Others Hot-bending process / TP Thickness: 2.55mm (±0.3mm) / Light Transmission: ≥85%

Interfaces / Connectors / Controls

Interfaces&Connectors VGA x1 / HDMI x1 / USB x1 for Touch / DC x1 / Audio x1; 5 OSD buttons

LED Parameters RGB colorful effect; atmosphere light mode: solid color, marquee, water, breathing, gradient mode on the Front / Side / Back(with **Programmable Controller**)

Power Supply / Consumption: 100-240 VAC / 12VDC +/- 5%; 25 - 163W typical, 1.5W sleep, 0.5W off

Mechanical Product Dimension / Weight (Unpacked / Packed) / Box Dimensions: Subject to change
VESA Mounting: 140 x 180 - 250 x 260 / 300 x 260mm0mm

Environmental Operating / Storage Temperature: -10°C to 50°C / -20°C to 60°C

Accessories Power adapter / cable, HDMI / VGA / Touch USB cable, VESA mount kits w/screws (**opt.**)

Others MTBF / Warranty / Enclosure Color: 50,000 hours demonstrated / 1-year / **black** | white
Ready for Use: 24/7, **Curvature: R1500 - R1800**

* TDD (www.tddtouch.com, sales@tddtouch.com) reserves the right to change specifications without prior notice. **09**

TDD-PTM-DPxxx

15-21.5" Desktop POS PCAP Touch Monitors



Overview

The **TDD Touch Monitors** include **Standard, Industrial (Open Frame Bezel-free | Rear Mount, Panel Mount, Closed Frame), Outdoor, Waterproof, Stainless Steel, Marine, Curved, Desktop POS, Commercial Displays, Medical and Custom** types, delivers an industrial, reliable and cost-effective solution with outstanding image clarity & accurate touch response for OEMs & systems integrators. 7-98" sizes with rugged bezel, flat structure, high durability and versatility for Kiosks applications from Self-service, Automated Parking, Industrial Automation, Outdoor Control, Healthcare to Gaming.

Features

- Touch thru glass enabled with PCAP supports thickness up to 5mm
- Desktop or wall mount design with **Steel Case & Stand (Aluminum Alloy with Plastic Cover)**
- IP65 (front) for water and dust protection, flexible mounting in any table, kiosk, or cabinet design

Specifications

Panel

Diagonal Size	15 – 21.5"(4:3 / 16:9 / 16:10), 17.78 - 109.22cm, Active matrix TFT LCD (LED)
Active Area (mm)	305.5 mm x 229.5 mm - 477.6 mm x 269.1 mm
Resolution	800 x 600 / 1024 x 600 / 1024 x 768 / 1280 x 800 / 1280 x 1024 / 1920 x 1080
Viewing Angle	Horizontal: 75 - 89° or 150 - 178° total / Vertical: 75 - 89° or 145 - 178° total
Number of Colors	16.7 million
Brightness (typical)	250 - 350 nits
Response Time-total	8 - 25 (Typ.)(Tr+Td) ms
Contrast Ratio	500:1 - 1200:1
Input Video Frequency	Horizontal: 30 - 60 KHz / Vertical: 50 - 75 Hz

Touch

Touch Technology	PCAP (Projected Capacitive) - 10 Touch Capacity
Surface Treatment	Water, Dust & Vandal proof; Optional: Anti-glare, Anti-fingerprint, Anti-smudge, Anti-bacterial
Supported OS	Windows / Android / Linux / Mac

Interfaces / Connectors / Controls

Video Interfaces	VGA x1 / HDMI x1 / DVI x1 (opt.) / Display Port x1 (opt.) / USB x1 for Touch; HDCP: Yes
Connectors & Controls	Audio Mini jack x1 / DC x1; 5 OSD buttons

Power

Supply / Consumption: 100-240 VAC / 12VDC +/- 5%; 20W typical, 1.5W sleep, 0.5W off

Mechanical

Product Dimension / Weight (Unpacked / Packed) / Box Dimensions: Subject to change
VESA Mounting: 75 x 75 / 100 x 100mm

Environmental

Operating / Storage Temperature: -10°C to 50°C / -20°C to 60°C

Accessories

Power adapter / cable, HDMI / VGA / Touch USB cable, tables stand w/screws (opt.)

Others

MTBF / Warranty / Enclosure Color: 50,000 hours demonstrated / 1-year / black | silver
Ready for Use: 24/7

TDD-PTM-LF|DTMxxx | TDD-PTM-R236A | TDD-PTM-BT195 7-98" PCAP Touch Monitors – Commercial Touch Displays



LED Framed (Closed Frame)



Digital Signage (Closed Frame)



Round (Closed Frame)



Bar Type (Closed Frame)

Overview

The TDD Touch Monitors include Standard, Industrial (Open Frame Bezel-free | Rear Mount, Panel Mount, Closed Frame), Outdoor, Waterproof, Stainless Steel, Marine, Curved, Desktop POS, Commercial Displays, Medical and Custom types, delivers an industrial, reliable and cost-effective solution with outstanding image clarity & accurate touch response for OEMs & systems integrators. 7-98" sizes with rugged bezel, flat structure, high durability and versatility for Kiosks applications from Self-service, Automated Parking, Industrial Automation, Outdoor Control, Healthcare to Gaming.

Features

- Touch(optional for no touch) thru glass enabled with PCAP with Customized LED Tiles for casino slot machines
- True-flat design with IP65 protection for floating monitor outside your cabinet with front LED Tiles & Halo Effect
- Side LED tiles react to on-screen events, enhancing game features, building anticipation and celebrating big wins

Specifications

Panel

Diagonal Size	17 - 98"(4:3 / 16:9 / 16:10), 43 - 248.92cm, Active matrix TFT LCD (LED)
Active Area (mm)	338.92 mm x 271.34 mm –2158.4 mm x 1214.4 mm
Resolution	1024x600/1024x768/1280x800/1280x1024/1920x1080/3840x2160/ 1280x1280(R)/1920x540
Viewing Angle	Horizontal: 75 - 89° or 150 - 178° total / Vertical: 75 - 89° or 145 - 178° total
Number of Colors	16.7 million
Brightness (typical)	250 - 1500 nits (1500 nits for Round, 500 nits for Bar Type)
Response Time-total	8 - 25 (Typ.)(Tr+Td) ms
Contrast Ratio	500:1 - 1200:1
Input Video Frequency	Horizontal: 30 - 60 KHz / Vertical: 50 - 75 Hz

Touch

Touch Technology	PCAP (Projected Capacitive) - 10 Touch Capacity
Surface Treatment	Water, Dust & Vandal proof; Optional: Anti-glare, Anti-fingerprint, Anti-smudge, Anti-bacterial
Supported OS	Windows / Android / Linux / Mac

Interfaces / Connectors / Controls

Video Interfaces	VGA x1 / HDMI x1 / DVI x1 (opt.) / Display Port x1 (opt.) / USB x1 for Touch; HDCP: Yes
Connectors & Controls	Audio Mini jack x1 / DC x1; 5 OSD buttons

Power

Supply / Consumption: 100-240 VAC / 12VDC +/- 5%; 20-450W typical, 1.5W sleep, 0.5W off

Mechanical

Product Dimension / Weight (Unpacked / Packed) / Box Dimensions: Subject to change
VESA Mounting: 75 x 75 / 100 x 100 / 200 x 300 / 300 x 300 / 400 x 800mm

Environmental

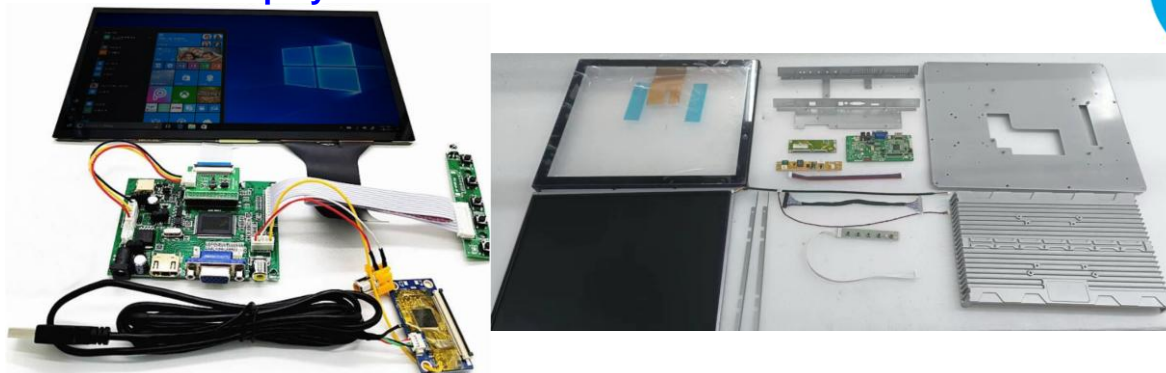
Operating / Storage Temperature: -10°C to 50°C / -20°C to 60°C

Accessories

Power adapter / cable, HDMI / VGA / Touch USB cable, wall mount brackets w/screws (opt.)

Others

MTBF / Warranty / Enclosure Color: 50,000 hours demonstrated / 1-year / black | silver
Ready for Use: 24/7, **Aluminum Frame for Digital Signage / Round / Bar Type**



Overview

The **TDD** PTM-TDM series comes with industrial grade LCD display and project capacitive touch. It is also available with flexible options for LCD screens enhanced treatment such as **Anti-glare** surface treatment and **Optical Bonding** solution, delivers an industrial, reliable and cost-effective solution with outstanding image clarity & accurate touch response for OEMs & systems integrators. 7-98" sizes with rugged bezel & flat structure (**optional**), high durability and versatility for embedded applications which customers have maximum flexibility for mechanical design.

Features

- Touch thru glass (**optional for AG & Anti-mist Optical Bonding**) enabled with PCAP supports thickness up to 5mm
- Composed by **Industrial(optional)** TFT-LCD, CTP / AD / TP Board & power supply with cables and USB cables
- IP65 (front) for water and dust protection, flexible mounting in any table, kiosk, or cabinet design

Specifications

Panel

Diagonal Size	10.1 - 21.5"(4:3 / 16:9 / 16:10), 17.78 - 109.22cm, Active matrix TFT LCD (LED)
Active Area (mm)	216.96 mm x 135.6 mm - 476.64 mm x 268.11 mm
Resolution	800 x 600 / 1024 x 600 / 1024 x 768 / 1280 x 800 / 1280 x 1024 / 1920 x 1080
Viewing Angle	Horizontal: 75 - 89° or 150 - 178° total / Vertical: 75 - 89° or 145 - 178° total
Number of Colors	16.7 million
Brightness (typical)	250 - 350 nits
Response Time-total	8 - 25 (Typ.)(Tr+Td) ms
Contrast Ratio	500:1 - 1200:1
Input Video Frequency	Horizontal: 30 - 60 KHz / Vertical: 50 - 75 Hz

Touch

Touch Technology	PCAP (Projected Capacitive) - 10 Touch Capacity
Surface Treatment	Water, Dust & Vandal proof; Optional: Anti-glare, Anti-fingerprint, Anti-smudge, Anti-bacterial
Supported OS	Windows / Android / Linux / Mac

Interfaces / Connectors / Controls

Video Interfaces	VGA x1 / HDMI x1 / DVI x1 (opt.) / Display Port x1 (opt.) / USB x1 for Touch; HDCP: Yes
Connectors & Controls	Audio Mini jack x1 / DC x1; 5 OSD buttons

Power

Supply / Consumption: 100-240 VAC / 12VDC +/- 5%; 10-25W typical, 1.2W sleep, 0.5W off

Mechanical

Product Dimension / Weight (Unpacked / Packed) / Box Dimensions: Subject to change
VESA Mounting: 75 x 75 / 100 x 100mm

Environmental

Operating / Storage Temperature: -10°C to 50°C / -20°C to 60°C

Accessories

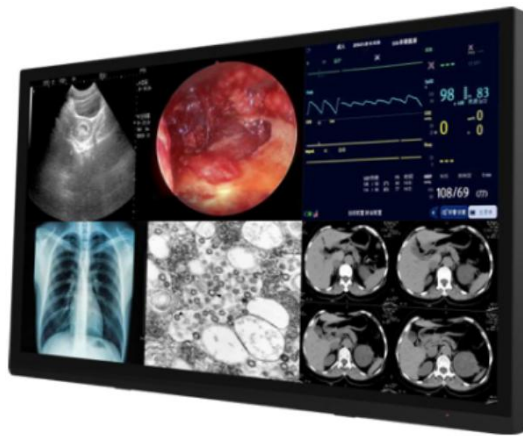
Power adapter / cable, HDMI / VGA / Touch USB cable, flush mount brackets w/screws (opt.)

Others

MTBF / Warranty / Enclosure Color: 50,000 hours demonstrated / 1-year / N/A
Ready for Use: 24/7, **SKD(Semi Knocked Down) Option**

TDD-OFTM-BFxxxM

13.3-21.5" Medical Bezel-free (Rear Mount) Open Frame PCAP Touch Monitors



Overview

The **TDD Touch Monitors** include **Standard, Industrial (Open Frame Bezel-free | Rear Mount, Panel Mount, Closed Frame), Outdoor, Waterproof, Stainless Steel, Marine, Curved, Desktop POS, Commercial Displays, Medical and Custom** types, delivers an industrial, reliable and cost-effective solution with outstanding image clarity & accurate touch response for OEMs & systems integrators. 7-98" sizes with rugged bezel, flat structure, high durability and versatility for Kiosks applications from Self-service, Automated Parking, Industrial Automation, Outdoor Control, Healthcare to Gaming.

Features

- **DICOM Medical Grade** Touchscreen Monitors, Easy to Clean, Enhancing Clinical Workflow with Touch
- Embedded design with **Steel / Aluminum Frame / Back**
- IP65 (front) for water and dust protection, flexible mounting in any table, kiosk, or cabinet design

Specifications

Panel

Diagonal Size	13.3 – 21.5"(4:3 / 16:9 / 16:10), 33.78 - 55cm, Active matrix TFT LCD (LED)
Active Area (mm)	293.76 mm x 165.24 mm – 478 mm x 269.6 mm
Resolution	800 x 600 / 1024 x 600 / 1024 x 768 / 1280 x 800 / 1280 x 1024 / 1920 x 1080
Viewing Angle	Horizontal: 75 - 89° or 150 - 178° total / Vertical: 75 - 89° or 145 - 178° total
Number of Colors	16.7 million
Brightness (typical)	250 - 300 nits
Response Time-total	8 - 25 (Typ.)(Tr+Td) ms
Contrast Ratio	500:1 - 1200:1
Input Video Frequency	Horizontal: 30 - 60 KHz / Vertical: 50 - 75 Hz

Touch

Touch Technology	PCAP (Projected Capacitive) - 10 Touch Capacity
Surface Treatment	Water, Dust & Vandal proof; Optional: Anti-glare, Anti-fingerprint, Anti-smudge, Anti-bacterial
Supported OS	Windows / Android / Linux / Mac

Interfaces / Connectors / Controls

Video Interfaces	HDMI x1 / DVI x1 (opt.) / Display Port x1 (opt.) / USB x1 for Touch; HDCP: Yes
Connectors & Controls	Audio Mini jack x1 / DC x1; 5 OSD buttons

Power

Supply / Consumption: 100-240 VAC / 12VDC +/- 5%; 20W typical, 1.5W sleep, 0.5W off

Mechanical

Product Dimension / Weight (Unpacked / Packed) / Box Dimensions: Subject to change
VESA Mounting: 75 x 75 / 100 x 100mm

Environmental

Operating / Storage Temperature: -10°C to 50°C / -20°C to 60°C

Accessories

Power adapter / cable, HDMI / VGA / Touch USB cable, flush mount brackets w/screws (opt.)

Others

MTBF / Warranty / Enclosure Color: 50,000 hours demonstrated / 1-year / black | white, silver
Ready for Use: 24/7



Overview

The **TDD Touch Monitors** include **Standard, Industrial (Open Frame Bezel-free | Rear Mount, Panel Mount, Closed Frame), Outdoor, Waterproof, Stainless Steel, Marine, Curved, Desktop POS, Commercial Displays, Medical and Custom** types, delivers an industrial, reliable and cost-effective solution with outstanding image clarity & accurate touch response for OEMs & systems integrators. 7-98" sizes with rugged bezel, flat structure, high durability and versatility for Kiosks applications from Self-service, Automated Parking, Industrial Automation, Outdoor Control, Healthcare to Gaming.

Features

- Touch thru glass (with **AG, UV Filter & Anti-mist Optical Bonding**) enabled with PCAP supports thickness up to 5mm
- Embedded design with **Rugged High Bright TFT Panel&Auto-dimmer, Sturdy Aluminum Front Panel&Steel Back**
- IP65 (front) for water and **Dust Protection with Smart Fans**, flexible mounting in any table, kiosk, or cabinet design

Specifications

Panel

Diagonal Size	7 - 27"(4:3 / 16:9 / 16:10), 17.78 – 68.6cm, Active matrix TFT LCD (LED)
Active Area (mm)	154.0 mm x 85.92 mm - 597.88 mm x 336.31mm
Resolution	800 x 600 / 1024 x 600 / 1024 x 768 / 1280 x 800 / 1280 x 1024 / 1920 x 1080
Viewing Angle	Horizontal: 75 - 89° or 150 - 178° total / Vertical: 75 - 89° or 145 - 178° total
Number of Colors	16.7 million
Brightness (typical)	1000 nits
Response Time-total	8 - 25 (Typ.)(Tr+Td) ms
Contrast Ratio	500:1 - 1200:1
Input Video Frequency	Horizontal: 30 - 60 KHz / Vertical: 50 - 75 Hz

Touch

Touch Technology	PCAP (Projected Capacitive) - 10 Touch Capacity (Optional: Waterproof Firmware)
Surface Treatment	Water, Dust & Vandal proof; Optional: Anti-glare, Anti-fingerprint, Anti-smudge, Anti-bacterial
Supported OS	Windows / Android / Linux / Mac

Interfaces / Connectors / Controls

Video Interfaces	VGA x1 / HDMI x1 / DVI x1 (opt.) / Display Port x1 (opt.) / USB x1 for Touch; HDCP: Yes
Connectors & Controls	Audio Mini jack x1 / DC x1; 5 OSD buttons

Power

Supply / Consumption: 100-240 VAC / 12VDC +/- 5%; 10-27W typical, 1.2W sleep, 0.5W off

Mechanical

Product Dimension / Weight (Unpacked / Packed) / Box Dimensions: Subject to change
VESA Mounting: 75 x 75 / 100 x 100mm

Environmental

Operating / Storage Temperature: **-20°C to 70°C** / -30°C to 80°C (**except for some models**)

Accessories

Power adapter / cable, HDMI / VGA / Touch USB cable, panel mount kits w/screws (opt.)

Others

MTBF / Warranty / Enclosure Color: 50,000 hours demonstrated / 1-year / black | silver
Ready for Use: 24/7

TDD-PTM-CF320DP

32" **Dustproof** Closed Frame (Desktop / Wall Mount) PCAP Touch Monitors



Overview

The **TDD Touch Monitors** include **Standard, Industrial (Open Frame Bezel-free | Rear Mount, Panel Mount, Closed Frame), Outdoor, Waterproof, Stainless Steel, Marine, Curved, Desktop POS, Commercial Displays, Medical and Custom** types, delivers an industrial, reliable and cost-effective solution with outstanding image clarity & accurate touch response for OEMs & systems integrators. 7-98" sizes with rugged bezel, flat structure, high durability and versatility for Kiosks applications from Self-service, Automated Parking, Industrial Automation, Outdoor Control, Healthcare to Gaming.

Features

- Touch thru glass enabled with PCAP supports thickness up to 5mm
- Full dustproof design with **Aluminum Frame & M12 Metal I/O Connectors** for USB, HDMI & power interface.
- IP65 (front) for water and dust protection, flexible mounting in any table, kiosk, or cabinet design

Specifications

Panel

Diagonal Size 32"(16:9), 81.28cm, Active matrix TFT LCD (LED)

Active Area (mm) 708.48 mm x 398.52 mm

Resolution 1920 x 1080

Viewing Angle Horizontal: 89° or 178° total / Vertical: 89° or 178° total

Number of Colors 16.7 million

Brightness (typical) 300 nits

Response Time-total 8 (Typ.)(G to G) ms

Contrast Ratio 1200:1

Input Video Frequency Horizontal: 30 - 60 KHz / Vertical: 50 - 75 Hz

Touch

Touch Technology PCAP (Projected Capacitive) - 10 Touch Capacity

Surface Treatment Water, Dust & Vandal proof; **Optional:** Anti-glare, Anti-fingerprint, Anti-smudge, Anti-bacterial

Supported OS Windows / Android / Linux / Mac

Interfaces / Connectors / Controls

Video Interfaces VGA x1 / HDMI x1 / DVI x1 (opt.) / Display Port x1 (opt.) / USB x1 for Touch; HDCP: Yes

Connectors & Controls Audio Mini jack x1 / DC x1; 5 OSD buttons

Power Supply / Consumption: 100-240 VAC / 12VDC +/- 5%; 47W typical, 1.5W sleep, 0.5W off

Mechanical Product Dimensions: 773.5 x 463.7 x 75mm / Weight (Unpacked / Packed): 25 / 30 kg
Box Dimensions: 950 x 229.5 x 640mm / VESA Mounting: 200 x 200mm

Environmental Operating / Storage Temperature: -10°C to 50°C / -20°C to 60°C

Accessories Power adapter / cable, HDMI / VGA / Touch USB cable, flush mount brackets w/screws (opt.)

Others MTBF / Warranty / Enclosure Color: 50,000 hours demonstrated / 1-year / black | white
Ready for Use: 24/7

TDD-TPC-BF|PM|PMS|CFxxx

7-43" Standard PCAP Touch Panel PCs



Bezel-free (Rear Mount)

Panel Mount

Slim Bezel Panel Mount

Closed Frame

Overview

The TDD Touch Panel PCs include **Standard, Industrial (Open Frame Bezel-free | Rear Mount, Panel Mount, Closed Frame), Outdoor, Waterproof, Stainless Steel, Marine, Curved, Desktop POS, Commercial Displays, Medical and Custom** types, deliver a great computing solution when your application requires the PCs to be integrated into equipment. It can withstand harsh industrial environment with multiple I/O & expansion slots, rugged internal components & fanless cooling systems. Powered by Android or Intel with heavy-duty aluminum or steel enclosure, high durability & versatility for Kiosks applications from Self-service, Automated Parking, Industrial Automation, Outdoor Control, Healthcare to Gaming.

Features

- Touch thru glass enabled with PCAP supports thickness up to 5mm
- Embedded design with **Steel Frame & Light Aluminum Back enclosure**
- IP65 (front) for water and dust protection, flexible mounting in any table, kiosk, or cabinet design

Specifications

System

Processor	Android: RK3188/RK3288/RK3566/RK3568 Quad-core Cortex-A9/A17/A55 1.6/1.8/ 2.0GHz Windows: Intel® J1900 / J4125 Quad Core 2.0 / 2.7GHz / Intel® Core™ i3 / i5 / i7 / i9 4-13 th G
Memory(RAM)	Android: 1 / 2GB(std) / 4 / 8 / 16GB; Windows: DDR3/4 2 / 4(std) / 8 / 16 / 32 / 64GB
Storage	Android: 4/8/ 16(std) /32/64GB eMMC Flash; Windows: 32/64(std)/128/256/512GB SSD/HDD

Panel

Diagonal Size	7 - 43"(4:3 / 16:9 / 16:10), 17.78 - 109.22cm, Active matrix TFT LCD (LED)
Resolution / Contrast	800 x 600 / 1024 x 600 / 1024 x 768 / 1280 x 800 / 1280 x 1024 / 1920 x 1080 / 500:1-1200:1
Viewing Angle	Horizontal: 85° / 89° or 170° / 178° total / Vertical: 80° / 89° or 160° / 178° total
Color Depth/Brightness	16.7 million / 250 - 600 nits
Response Time / Freq	8 - 30 (Typ.)(Tr+Td) ms / Horizontal: 30 - 60 KHz / Vertical: 50 - 75 Hz

Touch

Touch Technology / OS	PCAP (Projected Capacitive) - 10 Touch Capacity / Windows / Android / Linux / Mac
Surface Treatment	Water, Dust & Vandal proof; Optional: Anti-glare, Anti-fingerprint, Anti-smudge, Anti-bacterial

I / O Ports

Android	USB x4 / COM x2 / HDMI x1 / LAN x1 / WIFI x1 / DC x1 / TF-CARD x1 / Audio x1
Windows	USB x4 / COM x2 / VGA x1 / HDMI x1 / LAN x1 / WIFI x1 / DC x1 / Audio x1 / Mic x1

Power

Supply / Consumption: 100-240 VAC / 12VDC +/- 5%; 10-55W typical, 1.5W sleep, 0.5W off

Mechanical

Product Dimension / Weight (Unpacked / Packed) / Box Dimensions: Subject to change
VESA Mounting: 75 x 75 / 100 x 100 / 200 x 300 / 300 x 300mm

Environmental

Operating / Storage Temperature: -10°C to 50°C / -20°C to 60°C

Accessories

Power adapter / cable, flush/panel/wall mount brackets w/screws (opt.)

Others

MTBF / Warranty / Enclosure Color: 50,000 hours demonstrated / 1-year / black | silver
Ready for Use: 24/7, **A** = Aluminum Back, **S** = Steel Back in above **"Mechanical"**

TDD-TPC-BF|PM|CFxxxC

7-65" Industrial PCAP Touch Panel PCs



Bezel-free (Rear Mount)



Panel | Front Mount



Closed Frame

Overview

The TDD Touch Panel PCs include **Standard, Industrial (Open Frame Bezel-free | Rear Mount, Panel Mount, Closed Frame), Outdoor, Waterproof, Stainless Steel, Marine, Curved, Desktop POS, Commercial Displays, Medical and Custom** types, deliver a great computing solution when your application requires the PCs to be integrated into equipment. It can withstand harsh industrial environment with multiple I/O & expansion slots, rugged internal components & fanless cooling systems. Powered by Android or Intel with heavy-duty aluminum or steel enclosure, high durability & versatility for Kiosks applications from Self-service, Automated Parking, Industrial Automation, Outdoor Control, Healthcare to Gaming.

Features

- Touch thru glass enabled with PCAP supports thickness up to 5mm
- Embedded design with **Rugged TFT Panel, Sturdy Aluminum Frame & Steel Back**
- IP65 (front) for water and dust protection, flexible mounting in any table, kiosk, or cabinet design

Specifications

System

Processor	Android: RK3188/RK3288/RK3566/RK3568 Quad-core Cortex-A9/A17/A55 1.6/1.8/ 2.0GHz Windows: Intel® J1900 / J4125 Quad Core 2.0 / 2.7GHz / Intel® Core™ i3 / i5 / i7 / i9 4-13 th G
Memory(RAM)	Android: 1 / 2GB(std) / 4 / 8 / 16GB; Windows: DDR3/4 2 / 4(std) / 8 / 16 / 32 / 64GB
Storage	Android: 4/8/ 16(std) /32/64GB eMMC Flash; Windows: 32/64(std)/128/256/512GB SSD/HDD

Panel

Diagonal Size	7 - 65"(4:3 / 16:9 / 16:10), 17.78 – 165.1cm, Active matrix TFT LCD (LED)
Resolution / Contrast	800 x 600 / 1024 x 600 / 1024 x 768 / 1280 x 800 / 1280 x 1024 / 1920 x 1080 / 500:1-1200:1
Viewing Angle	Horizontal: 85° / 89° or 170° / 178° total / Vertical: 80° / 89° or 160° / 178° total
Color Depth/Brightness	16.7 million / 250 - 600 nits
Response Time / Freq	8 - 30 (Typ.)(Tr+Td) ms / Horizontal: 30 - 60 KHz / Vertical: 50 - 75 Hz

Touch

Touch Technology / OS	PCAP (Projected Capacitive) - 10 Touch Capacity / Windows / Android / Linux / Mac
Surface Treatment	Water, Dust & Vandal proof; Optional: Anti-glare, Anti-fingerprint, Anti-smudge, Anti-bacterial

I / O Ports

Android	USB x4 / COM x2 / HDMI x1 / LAN x1 / WIFI x1 / DC x1 / TF-CARD x1 / Audio x1
Windows	USB x4 / COM x2 / VGA x1 / HDMI x1 / LAN x1 / WIFI x1 / DC x1 / Audio x1 / Mic x1

Power

Supply / Consumption: 100-240 VAC / 12VDC +/- 5%; 10-180W typical, 1.5W sleep, 0.5W off

Mechanical

Product Dimension / Weight (Unpacked / Packed) / Box Dimensions: Subject to change
VESA Mounting: 75 x 75 / 100 x 100 / 200 x 300 / 300 x 300 / 400 x 400mm

Environmental

Operating / Storage Temperature: -10°C to 50°C / -20°C to 60°C

Accessories

Power adapter / cable, flush/panel/wall mount brackets(opt.)

Others

MTBF / Warranty / Enclosure Color: 50,000 hours demonstrated / 1-year / black | silver
Ready for Use: 24/7

TDD-TPC-BFxxxHO

7-65" Outdoor Bezel-free (Rear Mount) Open Frame PCAP Touch Panel PCs



Overview

The TDD Touch Panel PCs include **Standard, Industrial (Open Frame Bezel-free | Rear Mount, Panel Mount, Closed Frame), Outdoor, Waterproof, Stainless Steel, Marine, Curved, Desktop POS, Commercial Displays, Medical and Custom** types, deliver a great computing solution when your application requires the PCs to be integrated into equipment. It can withstand harsh industrial environment with multiple I/O & expansion slots, rugged internal components & fanless cooling systems. Powered by Android or Intel with heavy-duty aluminum or steel enclosure, high durability & versatility for Kiosks applications from Self-service, Automated Parking, Industrial Automation, Outdoor Control, Healthcare to Gaming.

Features

- Touch thru glass (with **AG, UV Filter & Anti-mist Optical Bonding**) enabled with PCAP supports thickness up to 5mm
- Embedded design with **Rugged High Bright TFT Panel&Auto-dimmer, Sturdy Aluminum Front Frame&Steel Back**
- IP65 (front) for water and **Dust Protection with Smart Fans**, flexible mounting in any table, kiosk, or cabinet design

Specifications

System

Processor	Android: RK3188/RK3288/RK3566/RK3568 Quad-core Cortex-A9/A17/A55 1.6/1.8/ 2.0GHz Windows: Intel® J1900 / J4125 Quad Core 2.0 / 2.7GHz / Intel® Core™ i3 / i5 / i7 / i9 4-13 th G
Memory(RAM)	Android: 1 / 2GB(std) / 4 / 8 / 16GB; Windows: DDR3/4 2 / 4(std) / 8 / 16 / 32 / 64GB
Storage	Android: 4/8/ 16(std) /32/64GB eMMC Flash; Windows: 32/64(std)/128/256/512GB SSD/HDD

Panel

Diagonal Size	7 - 65"(4:3 / 16:9 / 16:10), 17.78 – 165.1cm, Active matrix TFT LCD (LED)
Resolution / Contrast	800 x 600 / 1024 x 600 / 1024 x 768 / 1280 x 800 / 1280 x 1024 / 1920 x 1080 / 500:1-1200:1
Viewing Angle	Horizontal: 85° / 89° or 170° / 178° total / Vertical: 80° / 89° or 160° / 178° total
Color Depth/Brightness	16.7 million / 1000 - 2000 nits
Response Time / Freq	8 - 30 (Typ.)(Tr+Td) ms / Horizontal: 30 - 60 KHz / Vertical: 50 - 75 Hz

Touch

Touch Technology / OS	PCAP (Projected Capacitive) - 10 Touch Capacity (Optional: Waterproof Firmware)
Surface Treatment	Water, Dust & Vandal proof; Optional: Anti-glare, Anti-fingerprint, Anti-smudge, Anti-bacterial

I / O Ports

Android	USB x4 / COM x2 / HDMI x1 / LAN x1 / WIFI x1 / DC x1 / TF-CARD x1 / Audio x1
Windows	USB x4 / COM x2 / VGA x1 / HDMI x1 / LAN x1 / WIFI x1 / DC x1 / Audio x1 / Mic x1

Power

Supply / Consumption: 100-240 VAC / 12VDC +/- 5%; 10-180W typical, 1.5W sleep, 0.5W off

Mechanical

Product Dimension / Weight (Unpacked / Packed) / Box Dimensions: Subject to change
VESA Mounting: 75 x 75 / 100 x 100 / 200 x 300 / 300 x 300 / 400 x 400mm

Environmental

Operating / Storage Temperature: **-20°C to 70°C** / -30°C to 80°C (**except for some models**)

Accessories

Power adapter / cable, flush mount brackets w/screws (opt.)

Others

MTBF / Warranty / Enclosure Color: 50,000 hours demonstrated / 1-year / black | silver
Ready for Use: 24/7

TDD-TPC-PMxxxWP | TDD-TPC-CFxxxWPS

10.1-21.5" **Waterproof** PCAP Touch Panel PCs



Aluminum Panel Mount



Stainless Steel Closed Frame

Overview

The TDD Touch Panel PCs include **Standard, Industrial (Open Frame Bezel-free | Rear Mount, Panel Mount, Closed Frame), Outdoor, Waterproof, Stainless Steel, Marine, Curved, Desktop POS, Commercial Displays, Medical and Custom** types, deliver a great computing solution when your application requires the PCs to be integrated into equipment. It can withstand harsh industrial environment with multiple I/O & expansion slots, rugged internal components & fanless cooling systems. Powered by Android or Intel with heavy-duty aluminum or steel enclosure, high durability & versatility for Kiosks applications from Self-service, Automated Parking, Industrial Automation, Outdoor Control, Healthcare to Gaming.

Features

- Touch thru glass (with **Anti-mist Optical Bonding**) enabled with PCAP supports thickness up to 5mm
- Embedded design with **Rugged TFT Panel, Sturdy Aluminum or Anti-Corrosion 304 Stainless Steel Enclosure**
- **IP65 Fully Enclosed Fanless Design with M12 Metal I/O Connectors**, flexible mounting in any table, kiosk or cabinet

Specifications

System

Processor	Android: RK3188/RK3288/RK3566/RK3568 Quad-core Cortex-A9/A17/A55 1.6/1.8/ 2.0GHz Windows: Intel® J1900 / J4125 Quad Core 2.0 / 2.7GHz / Intel® Core™ i3 / i5 / i7 / i9 4-13 th G
Memory(RAM)	Android: 1 / 2GB(std) / 4 / 8 / 16GB; Windows: DDR3/4 2 / 4(std) / 8 / 16 / 32 / 64GB
Storage	Android: 4/8/ 16(std) /32/64GB eMMC Flash; Windows: 32/64(std)/128/256/512GB SSD/HDD

Panel

Diagonal Size	10.1 - 21.5"(4:3 / 16:9 / 16:10), 17.78 - 109.22cm, Active matrix TFT LCD (LED)
Resolution / Contrast	800 x 600 / 1024 x 600 / 1024 x 768 / 1280 x 800 / 1280 x 1024 / 1920 x 1080 / 500:1-1200:1
Viewing Angle	Horizontal: 85° / 89° or 170° / 178° total / Vertical: 80° / 89° or 160° / 178° total
Color Depth/Brightness	16.7 million / 250 - 1000 nits
Response Time / Freq	8 - 30 (Typ.)(Tr+Td) ms / Horizontal: 30 - 60 KHz / Vertical: 50 - 75 Hz

Touch

Touch Technology / OS	PCAP (Projected Capacitive) - 10 Touch Capacity (Optional: Waterproof Firmware)
Surface Treatment	Water, Dust & Vandal proof; Optional: Anti-glare, Anti-fingerprint, Anti-smudge, Anti-bacterial

I / O Ports

Android	USB x1 / COM x1 / LAN x1 / WIFI x1 / DC x1
Windows	USB x1 / COM x1 / LAN x1 / WIFI x1 / DC x1

Power

Supply / Consumption: 100-240 VAC / 12VDC +/- 5%; 10-25W typical, 1.5W sleep, 0.5W off

Mechanical

Product Dimension / Weight (Unpacked / Packed) / Box Dimensions: Subject to change
VESA Mounting: 75 x 75 / 100 x 100 / 200 x 300 / 300 x 300mm

Environmental

Operating / Storage Temperature: **-20°C to 70°**

Accessories

Power adapter / cable, HDMI / VGA / Touch USB cable, panel / wall mount brackets (opt.)

Others

MTBF / Warranty / Enclosure Color: 50,000 hours demonstrated / 1-year / black | silver
Ready for Use: 24/7

TDD-TPC-CFxxxSS

15-21.5" **Stainless Steel** Closed Frame (Desktop / Wall Mount) PCAP Touch Panel PCs



Overview

The TDD Touch Panel PCs include **Standard, Industrial (Open Frame Bezel-free | Rear Mount, Panel Mount, Closed Frame), Outdoor, Waterproof, Stainless Steel, Marine, Curved, Desktop POS, Commercial Displays, Medical and Custom** types, deliver a great computing solution when your application requires the PCs to be integrated into equipment. It can withstand harsh industrial environment with multiple I/O & expansion slots, rugged internal components & fanless cooling systems. Powered by Android or Intel with heavy-duty aluminum or steel enclosure, high durability & versatility for Kiosks applications from Self-service, Automated Parking, Industrial Automation, Outdoor Control, Healthcare to Gaming.

Features

- Touch thru glass (with **Anti-mist Optical Bonding**) enabled with PCAP supports thickness up to 5mm, **IP65 (front)**
- Embedded design with **Rugged and Easy to Clean 304 Stainless Steel Enclosure & Full Metal Jacket**
- **Designed for kitchen with Liquid, grease & food resistant**, flexible mounting in any table, kiosk, or cabinet design

Specifications

System

Processor	Android: RK3188/RK3288/RK3566/RK3568 Quad-core Cortex-A9/A17/A55 1.6/1.8/ 2.0GHz Windows: Intel® J1900 / J4125 Quad Core 2.0 / 2.7GHz / Intel® Core™ i3 / i5 / i7 / i9 4-13 th G
Memory(RAM)	Android: 1 / 2GB(std) / 4 / 8 / 16GB; Windows: DDR3/4 2 / 4(std) / 8 / 16 / 32 / 64GB
Storage	Android: 4/8/ 16(std) /32/64GB eMMC Flash; Windows: 32/64(std)/128/256/512GB SSD/HDD

Panel

Diagonal Size	15 – 21.5"(4:3 / 16:9 / 16:10), 17.78 - 109.22cm, Active matrix TFT LCD (LED)
Resolution / Contrast	800 x 600 / 1024 x 600 / 1024 x 768 / 1280 x 800 / 1280 x 1024 / 1920 x 1080 / 500:1-1200:1
Viewing Angle	Horizontal: 85° / 89° or 170° / 178° total / Vertical: 80° / 89° or 160° / 178° total
Color Depth/Brightness	16.7 million / 250 - 600 nits
Response Time / Freq	8 - 30 (Typ.)(Tr+Td) ms / Horizontal: 30 - 60 KHz / Vertical: 50 - 75 Hz

Touch

Touch Technology	PCAP (Projected Capacitive) - 10 Touch Capacity
Surface Treatment	Water, Dust & Vandal proof; Optional: Anti-glare, Anti-fingerprint, Anti-smudge, Anti-bacterial

I / O Ports

Android	USB x4 / COM x2 / HDMI x1 / LAN x1 / WIFI x1 / DC x1 / TF-CARD x1 / Audio x1
Windows	USB x4 / COM x2 / VGA x1 / HDMI x1 / LAN x1 / WIFI x1 / DC x1 / Audio x1 / Mic x1

Power

Supply / Consumption: 100-240 VAC / 12VDC +/- 5%; 20W typical, 1.5W sleep, 0.5W off

Mechanical

Product Dimension / Weight (Unpacked / Packed) / Box Dimensions: Subject to change
VESA Mounting: 75 x 75 / 100 x 100mm

Environmental

Operating / Storage Temperature: -10°C to 50°C / -20°C to 60°C

Accessories

Power adapter / cable, wall mount brackets w/screws (opt.)

Others

MTBF / Warranty / Enclosure Color: 50,000 hours demonstrated / 1-year / silver
Ready for Use: 24/7

* TDD (www.tddtouch.com, sales@tddtouch.com) reserves the right to change specifications without prior notice. **20**

TDD-TPC-PMxxxHO

7-27" **Outdoor Panel Mount (Front Mount) Open Frame PCAP Touch Panel PCs - Custom**



Overview

The TDD Touch Panel PCs include **Standard, Industrial (Open Frame Bezel-free | Rear Mount, Panel Mount, Closed Frame), Outdoor, Waterproof, Stainless Steel, Marine, Curved, Desktop POS, Commercial Displays, Medical and Custom** types, deliver a great computing solution when your application requires the PCs to be integrated into equipment. It can withstand harsh industrial environment with multiple I/O & expansion slots, rugged internal components & fanless cooling systems. Powered by Android or Intel with heavy-duty aluminum or steel enclosure, high durability & versatility for Kiosks applications from Self-service, Automated Parking, Industrial Automation, Outdoor Control, Healthcare to Gaming.

Features

- Touch thru glass (with **AG, UV Filter & Anti-mist Optical Bonding**) enabled with PCAP supports thickness up to 5mm
- Embedded design with **Rugged High Bright TFT Panel&Auto-dimmer, Sturdy Aluminum Front Panel&Steel Back**
- IP65 (front) for water and **Dust Protection with Smart Fans**, flexible mounting in any table, kiosk, or cabinet design

Specifications

System

Processor	Android: RK3188/RK3288/RK3566/RK3568 Quad-core Cortex-A9/A17/A55 1.6/1.8/ 2.0GHz Windows: Intel® J1900 / J4125 Quad Core 2.0 / 2.7GHz / Intel® Core™ i3 / i5 / i7 / i9 4-13 th G
Memory(RAM)	Android: 1 / 2GB(std) / 4 / 8 / 16GB; Windows: DDR3/4 2 / 4(std) / 8 / 16 / 32 / 64GB
Storage	Android: 4/8/ 16(std) /32/64GB eMMC Flash; Windows: 32/64(std)/128/256/512GB SSD/HDD

Panel

Diagonal Size	7 - 65"(4:3 / 16:9 / 16:10), 17.78 – 68.6cm, Active matrix TFT LCD (LED)
Resolution / Contrast	800 x 600 / 1024 x 600 / 1024 x 768 / 1280 x 800 / 1280 x 1024 / 1920 x 1080 / 500:1-1200:1
Viewing Angle	Horizontal: 85° / 89° or 170° / 178° total / Vertical: 80° / 89° or 160° / 178° total
Color Depth/Brightness	16.7 million / 250 - 600 nits
Response Time / Freq	8 - 30 (Typ.)(Tr+Td) ms / Horizontal: 30 - 60 KHz / Vertical: 50 - 75 Hz

Touch

Touch Technology / OS	PCAP (Projected Capacitive) - 10 Touch Capacity (Optional: Waterproof Firmware)
Surface Treatment	Water, Dust & Vandal proof; Optional: Anti-glare, Anti-fingerprint, Anti-smudge, Anti-bacterial

I / O Ports

Android	USB x4 / COM x2 / HDMI x1 / LAN x1 / WIFI x1 / DC x1 / TF-CARD x1 / Audio x1
Windows	USB x4 / COM x2 / VGA x1 / HDMI x1 / LAN x1 / WIFI x1 / DC x1 / Audio x1 / Mic x1

Power

Supply / Consumption: 100-240 VAC / 12VDC +/- 5%; 10-27W typical, 1.2W sleep, 0.5W off

Mechanical

Product Dimension / Weight (Unpacked / Packed) / Box Dimensions: Subject to change
VESA Mounting: 75 x 75 / 100 x 100mm

Environmental

Operating / Storage Temperature: **-20°C to 70°C** / -30°C to 80°C (**except for some models**)

Accessories

Power adapter / cable, panel mount kits w/screws (opt.)

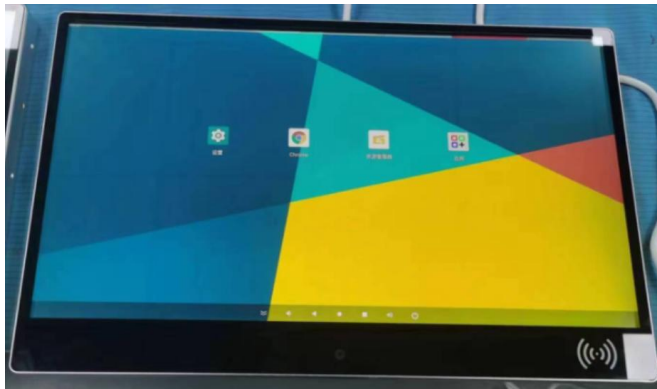
Others

MTBF / Warranty / Enclosure Color: 50,000 hours demonstrated / 1-year / black | silver
Ready for Use: 24/7

* TDD (www.tddtouch.com, sales@tddtouch.com) reserves the right to change specifications without prior notice. **21**

TDD-TPC-CF320D-RF

32" **Dust-proof RFID** Closed Frame (Desktop / Wall Mount) PCAP Touch Panel PCs



Overview

The TDD Touch Panel PCs include **Standard, Industrial (Open Frame Bezel-free | Rear Mount, Panel Mount, Closed Frame), Outdoor, Waterproof, Stainless Steel, Marine, Curved, Desktop POS, Commercial Displays, Medical and Custom** types, deliver a great computing solution when your application requires the PCs to be integrated into equipment. It can withstand harsh industrial environment with multiple I/O & expansion slots, rugged internal components & fanless cooling systems. Powered by Android or Intel with heavy-duty aluminum or steel enclosure, high durability & versatility for Kiosks applications from Self-service, Automated Parking, Industrial Automation, Outdoor Control, Healthcare to Gaming.

Features

- Touch thru glass enabled with PCAP supports thickness up to 5mm
- Full **dustproof** design with **Sturdy Aluminum Enclosure & Aviation Plugs**
- IP65 (front) for water and dust protection, flexible mounting in any table, kiosk, or cabinet design

Specifications

System

Processor	Android: RK3188/RK3288/RK3566/RK3568 Quad-core Cortex-A9/A17/A55 1.6/1.8/ 2.0GHz Windows: Intel® J1900 / J4125 Quad Core 2.0 / 2.7GHz / Intel® Core™ i3 / i5 / i7 / i9 4-13 th G
Memory(RAM)	Android: 1 / 2GB(std) / 4 / 8 / 16GB; Windows: DDR3/4 2 / 4(std) / 8 / 16 / 32 / 64GB
Storage	Android: 4/8/ 16(std) /32/64GB eMMC Flash; Windows: 32/64(std)/128/256/512GB SSD/HDD

Panel

Size / Active Area (mm)	31.5"(16:9), 80cm, Active matrix TFT LCD (LED) / 698.4 mm x 392.8 mm
Resolution / Contrast	1920 x 1080 / 1200:1
Viewing Angle	Horizontal: 89° or 178° total / Vertical: 89° or 178° total
Color Depth/Brightness	16.7 million / 400 nits
Response Time / Freq	8 (Typ.)(Tr+Td) ms / Horizontal: 30 - 60 KHz / Vertical: 50 - 75 Hz

Touch

Touch Technology / OS	PCAP (Projected Capacitive) - 10 Touch Capacity
Surface Treatment	Water, Dust & Vandal proof; Optional: Anti-glare, Anti-fingerprint, Anti-smudge, Anti-bacterial

I / O Ports

Android	USB x1 / COM x1 / LAN x1 / WIFI x1 / DC x1
Windows	USB x1 / COM x1 / LAN x1 / WIFI x1 / DC x1

Power

Supply / Consumption: 100-240 VAC / 12VDC +/- 5%; 47W typical, 1.5W sleep, 0.5W off

Mechanical

Product Dimensions: 753 x 480 x 57.3mm / Weight (Unpacked / Packed): 14.5 / 18.5kg
Box Dimensions: 790 x 520 x 97.3mm / VESA Mounting: 200 x 200mm

Environmental

Operating / Storage Temperature: -10°C to 60°C / -20°C to 60°C

Accessories

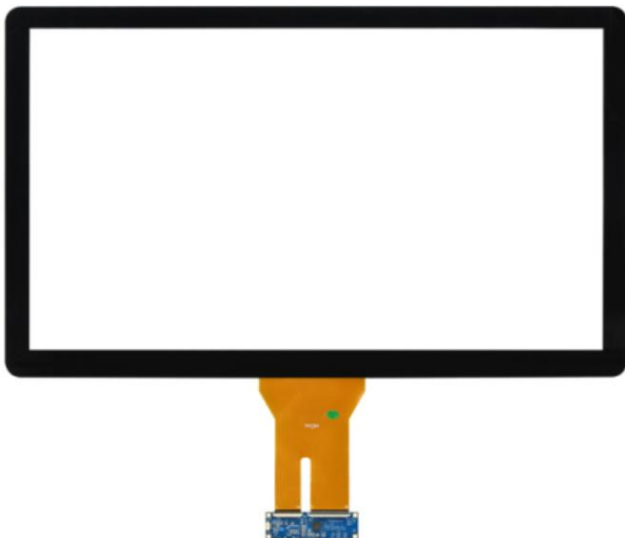
Power adapter / cable, wall mount brackets w/screws (opt.)

Others

MTBF / Warranty / Enclosure Color: 50,000 hours demonstrated / 1-year / black | silver
Ready for Use: 24/7, **with 125khz RFID card reader**

TDD-PCT-Mxxx

7-65" PCAP Touch Panels (Standard | Custom Sizes)



Overview

With a stylish, sleek no-bezel design (bezel available), **TDD** Projected Capacitive (PCAP) Touchscreens offer a range of screen sizes (small & medium and large format from 7" to 65") with user friendly multi-touch experience, fast and sensitive response and professional-grade reliability associated with kiosks, digital signage and control panels, operating with very light touch through highly durable glass surface. Our projected capacitive touch screen kits provide a high quality Glass on Glass sensor construction through the integration of touch panels, controllers, and drivers for commercial applications.

Features

- Multi-touch (10 points) operation with high light transmission and image clarity
- Two glass PCAP solution (2GS) with high touch durability and long term stability
- Customizable for screen dimensions, cover glass thickness, bonding and surface treatments

Specifications

Touch

Technology	PCAP(Projected Capacitive)
Number of Touches	10 points Multi Touch
Input Methods	Finger, Gloved hand, Passive stylus
Dimensions	7-65"
Light Transmittance	≥89%
Structure	Cover: 3-4mm, UV: 0.2mm, ITO + Sensor glass + ITO: 0.55-1.1mm (tolerance: ± 0.2mm)
Surface Treatment	Water, Dust & Vandal proof; Optional: Anti-glare, Anti-fingerprint, Anti-smudge, Anti-bacterial
Durability	Over 50 million touches in one location
Positional Accuracy	± 1.5mm
TFT TP Interface	FPC / I2C USB & COB all out PIN on TP controller
Report Rate	≥ 100Hz
Operating System	Windows / Android / Linux / Mac
Utilities	Multiple monitor, Various touch modes, Touch zones
Power	Supply / Consumption: USB input 5V +/- 5%; 120mA Max., 90Ma Idle, <1mA sleep
Mechanical	Cover VA/OD / Sensor AA/OD: Subject to change Weight(Unpack/Pack) / Box Sizes: Subject to change
Environmental	Operating / Storage Temperature: -20°C to 70°C, RH <90% (Non-Condensing)
Accessories	USB cable, TP controller

Others

MTBF / Warranty / Ready for Use: as above durability / 2-year / 24/7
Optical bonding for CTP and TFT is optional.

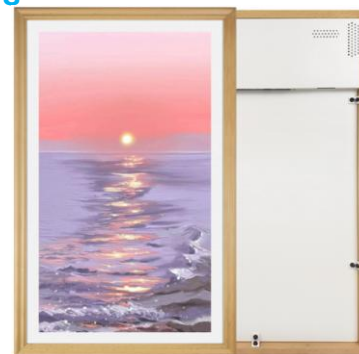
TDD-TDS-CFxxx / TDD-TDS-CF236 / TDD-TDS-WF270RE 7-98" PCAP Touch Digital Signage – Commercial Touch Displays



Digital Signage (Closed Frame)



Round (Closed Frame)



Rectangle Wooden Frame

Overview

The **TDD Touch Digital Signage** include **Standard, Wooden Frame, Bar Type, LED Framed & Round** types and **Interactive Flat Panels**. Using professional 7-98" LCD panel and adopts Android / Windows industrial CPU with powerful software processing ability and rich external ports with ultra-thin & ultra-light design, sandblasting oxidation and wire-drawing high-gloss enclosure processing. It can be horizontal or vertical with powerful function, is widely used in the advertising industry and is the preferred display equipment for door signage, equipment and instrument displays, elevator advertising, queuing displays, menus in the catering industry, government affairs/banks & other public institution signage.

Features

- Touch thru glass enabled with PCAP supports thickness up to 5mm
- Desktop or wall mount design with **Aluminum or Wooden Frame**
- IP65 (front) for water and dust protection, flexible mounting in any table, kiosk, or cabinet design

Specifications

System

Processor	Android: RK3188/RK3288/RK3566/ RK3568 Quad-core Cortex-A9/A17/ A55 1.6/1.8/ 2.0GHz Windows: Intel® J1900 / J4125 Quad Core 2.0 / 2.7GHz / Intel® Core™ i3 / i5 / i7 / i9 4-13 th G
Memory(RAM)	Android: 1 / 2GB(std) / 4 / 8 / 16GB; Windows: DDR3/4 2 / 4(std) / 8 / 16 / 32 / 64GB
Storage	Android: 4/8/ 16(std) /32/64GB eMMC Flash; Windows: 32/ 64(std) /128/256/512GB SSD/HDD

Panel

Diagonal Size	7 - 98"(4:3 / 16:9 / 16:10), 17.78 – 248.92cm, Active matrix TFT LCD (LED)
Resolution	1024x600/1024x768/1280x800/1280x1024/1920x1080/3840x2160/ 1280x1280(Round)
Viewing Angle	Horizontal: 85° / 89° or 170° / 178° total / Vertical: 80° / 89° or 160° / 178° total
Color Depth/Brightness	16.7 million / 250 - 1500 nits (1500 nits for Round)
Response Time / Freq	8 - 30 (Typ.)(Tr+Td) ms / Horizontal: 30 - 60 KHz / Vertical: 50 - 75 Hz

Touch

Touch Technology / OS	PCAP (Projected Capacitive) - 10 Touch Capacity / Windows / Android / Linux / Mac
Surface Treatment	Water, Dust & Vandal proof; Optional: Anti-glare, Anti-fingerprint, Anti-smudge, Anti-bacterial

I / O Ports

Android	USB x2 / HDMI x1 / LAN x1 / WIFI x1 / DC x1 / TF-CARD x1 / Audio x1
Windows	USB x4 / COM x2 / VGA x1 / HDMI x1 / LAN x1 / WIFI x1 / DC x1 / Audio x1 / Mic x1

Power

Supply / Consumption: 100-240 VAC / 12VDC +/- 5%; 10-4500W typical, 1.5W sleep, 0.5W off

Mechanical

Product Dimension / Weight (Unpacked / Packed) / Box Dimensions: Subject to change
VESA Mounting: 75 x 75 / 100 x 100 / 200 x 200 / 200 x 300 / 300 x 300 / 400 x 500mm

Environmental

Operating / Storage Temperature: -10°C to 50°C / -20°C to 60°C

Accessories

Power adapter / cable, wall mount brackets w/screws (opt.)

Others

MTBF / Warranty / Enclosure Color: 50,000 hours demonstrated / 1-year / black | silver
Ready for Use: 24/7

TDD-TPT-ADxxx

15-21.5" Desktop POS PCAP Touch POS Terminals



Overview

The **TDD Touch Panel PCs** include **Standard, Industrial (Open Frame Bezel-free | Rear Mount, Panel Mount, Closed Frame), Outdoor, Waterproof, Stainless Steel, Marine, Curved, Desktop POS, Commercial Displays, Medical and Custom** types, deliver a great computing solution when your application requires the PCs to be integrated into equipment. It can withstand harsh industrial environment with multiple I/O & expansion slots, rugged internal components & fanless cooling systems. Powered by Android or Intel with heavy-duty aluminum or steel enclosure, high durability & versatility for Kiosks applications from Self-service, Automated Parking, Industrial Automation, Outdoor Control, Healthcare to Gaming.

Features

- Touch thru glass enabled with PCAP supports thickness up to 5mm
- **Desktop POS design with Aluminum Case & Pure Aluminum Stand**
- IP65 (front) for water and dust protection, flexible mounting, **back switch & USB and detachable hard disk design**

Specifications

System

Processor	Android: RK3188/RK3288/RK3566/RK3568 Quad-core Cortex-A9/A17/A55 1.6/1.8/ 2.0GHz Windows: Intel® J1900 / J3455 Quad Core 2.0 / 2.7GHz / Intel® Core™ i3 / i5 / i7 / i9 4-13 th G
Memory(RAM)	Android: 1 / 2GB(std) / 4 / 8 / 16GB; Windows: DDR3/4 2 / 4(std) / 8 / 16 / 32 / 64GB
Storage	Android: 4/8/ 16(std) /32/64GB eMMC Flash; Windows: 32/64(std)/128/256/512GB SSD/HDD

Panel

Size / Active Area (mm)	15 – 21.5"(4:3 / 16:9 / 16:10), 17.78 - 109.22cm, Active matrix TFT LCD (LED)
Resolution / Contrast	800 x 600 / 1024 x 600 / 1024 x 768 / 1280 x 800 / 1280 x 1024 / 1920 x 1080 / 500:1-1200:1
Viewing Angle	Horizontal: 85° / 89° or 170° / 178° total / Vertical: 80° / 89° or 160° / 178° total
Color Depth/Brightness	16.7 million / 250 - 600 nits
Response Time / Freq	8 - 30 (Typ.)(Tr+Td) ms / Horizontal: 30 - 60 KHz / Vertical: 50 - 75 Hz

Touch

Touch Technology / OS	PCAP (Projected Capacitive) - 10 Touch Capacity / Windows / Android / Linux / Mac
Surface Treatment	Water, Dust & Vandal proof; Optional: Anti-glare, Anti-fingerprint, Anti-smudge, Anti-bacterial

I / O Ports

Android	USB x4 / COM x2 / HDMI x1 / LAN x1 / WIFI x1 / DC x1 / TF-CARD x1 / Audio x1
Windows	USB x4 / COM x2 / VGA x1 / HDMI x1 / LAN x1 / WIFI x1 / DC x1 / Audio x1 / Mic x1

Power

Supply / Consumption: 100-240 VAC / 12VDC +/- 5%; 20W typical, 1.5W sleep, 0.5W off

Mechanical

Product Dimension / Weight (Unpacked / Packed) / Box Dimensions: Subject to change
VESA Mounting: 75 x 75 / 100 x 100mm

Environmental

Operating / Storage Temperature: -10°C to 50°C / -20°C to 60°C

Accessories

Power adapter / cable, tables stand w/screws (opt.)

Others

MTBF / Warranty / Enclosure Color: 50,000 hours demonstrated / 1-year / black | white
Ready for Use: 24/7

TDD-WFD-S/DXXXH (-H/F)-21.5-86" **2500 nits** High Brightness Window Facing Displays



Wall Mounted (1 Side) Hanging (1 Side) Floor Stand (1 Side) Floor Stand (2 Sides) Hanging (2 Sides)

Overview

Designed especially for window facing environments in direct sunlight, the **TDD Ultra High Brightness Window Facing Displays** include **Wall Mounted, Single Sided Hanging, Single Sided Floor Standing, Double Sided Hanging** and **Double Sided Floor Standing** types, are a proven solution for storefront direct sunlight & high ambient light applications. Providing ample brightness, high contrast picture quality and vibrant and dynamic content displayed through the window with professional ultra high brightness LCDs up to 5000 nits, it will attract customers to your business, despite the viewer wearing polarized sunglasses - making it the ideal solution for outward-facing window-facing applications in direct sunlight.

Features

- 2000 ~ 5000 nits, Direct Sunlight Readable, 24 / 7 IPS Panel with Wide Operating Temperature
- Ultra Resistant to Blackening Defect (up to 110°C)
- Stylish Lightweight Enclosure with **18mm** Sleek Thin Even **Aluminum Bezel**
- With Ultra Quiet Smart Temperature Control System & Ambient Light Sensor

Specifications

System

Processor	Android: RK3188/3288/3566/ RK3568(std) Quad-core Cortex-A9/ A17/A55 1.6/ 1.8 / 2.0GHz Windows: Optional (required motherboard size: 120*120mm)
Memory(RAM)	Android: 1 / 2GB(std) / 4 / 8 / 16GB; Windows: N/A
Storage	Android: 4/8/ 16(std) /32/64GB eMMC Flash; Windows: N/A

Panel

Size / Active Area (mm)	21.5-86"(16:9), 54.61-218.44cm, Active matrix TFT LCD / 698.4x392.85 - 1895.2x1065.6mm
Resolution / Contrast	1920 x 1080 / 3840 x 2160 - / 1200:1
Viewing Angle	Horizontal: 89° or 178° total / Vertical: 89° or 178° total
Color Depth/Brightness	16.7 million / 2500 nits
Response Time / Freq	8 (Typ.)(Tr/Td) ms / Horizontal: 30 ~ 60 KHz / Vertical: 50 ~ 75 Hz
Surface	Glossy / Antiglare (Haze 3%), hard coating (3H)

Blackening Defect Free Up to **105°C** (221°F)

I / O Ports(Android | Windows) USB x2 / HDMI x1 / LAN x1 / WIFI x1 / DC x1 / TF-CARD x1 / Audio x1 | N/A

Power

Supply / Consumption: 100-240V ~ 50/60Hz / 145-960W (Typ. / Max.), 1.5W sleep, 0.5W off

Mechanical

(Default: Without Hanging Bracket)

Product Dimensions: Subject to change, VESA Mounting: 150 x 150/200 x 300/400 x 600mm
Weight (Unpack / Carton / Wooden Case | Pallet): Subject to change
Box Sizes(Carton / Wooden Case/Pallet): Subject to change

Environmental

Operating/Storage Temperature | Humidity: 0 ~ 50°C/-20 ~ 60°C | 10% ~ 80% RH(Non-cond.)

Accessories

Power adapter / cable, remote control, wall | ceiling mount / floor / table stand w/screws (**opt.**)

Others

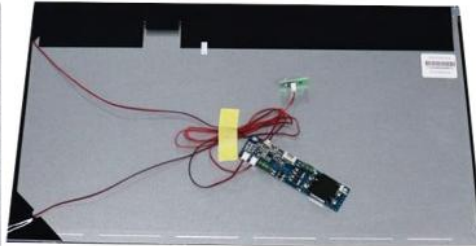
MTBF / Warranty / Enclosure Color: 50,000 hours demonstrated / 1-year / **black** | silver (**opt.**)
Ready for Use: 24/7, **Bezel Width: 18mm, Portrait/Landscape, with Ambient Light Sensor**

TDD-TD|OFTD-xxxH

10.1-65" High Brightness TFT Displays



10.1-27"



21.5-65" Open Frame



Overview

Designed especially for outdoor application, the **TDD High Brightness TFT Displays** include **10.1 to 86 inch, Open Frame, Optical Bonding, Solar Powered, Bar Type, Full Array Local Dimming, Ultra & Custom High Brightness Displays** types, ensuring excellent visibility in direct sunlight. Custom backlight solution & advanced brightness sensor allow for automatic adjustments based on ambient light, optimizing readability and energy efficiency, ensuring the clear visibility at all times and extending the lifespan of the displays – making it the ideal solution for the bright environments.

Features **(with Durable Metal Case for Accessories)**

- 1000 up to 5000 nits, Sunlight Readable, Wide Operating Temperature
- 24/7 IPS Panel with Industrial Grade LED Backlights (analog / PWM Dimming Control)
- Available in Kits Form, Open Frame, Waterproof Optical Bonding Tempered Glass and Fully Custom Design

Specifications

Panel

LCD Type	TFT / IPS / Transmissive / Normally Black
Diagonal Size	10.1-65"(4:3 / 16:9 / 16:10), 25.65 – 165.1cm, Active matrix TFT LCD (WLED)
Active Area (mm)	216.96 mm x 135.6 mm - 1428.48 mm x 803.52 mm
Pixel Pitch (H x V)	0.1695 x 0.1695 mm - 0.372 x 0.372 mm
Resolution	1920 x 1080 / 3840 x 2160
Viewing Angle	Horizontal: 89° or 178° total / Vertical: 89° or 178° (Typ.)(CR≥10)
Number of Colors	16.7 million
Brightness (typical)	1000 - 2000 nits
Response Time-total	8 - 30 (Typ.)(Tr+Td) ms
Contrast Ratio	1200:1
Input Video Frequency	Horizontal: 30 - 60 KHz / Vertical: 50 - 75 Hz
Interface	LVDS 20-51 pins
Supply Voltage	12V (Typ.)

PCAP Touch Panel **None**

LCD Controller (A/D) Board

Video Interfaces	Default: 1*VGA, 1*HDMI for 1K, 2*HDMI for 4K; Optional: DVI x1, Display Port x1
Connectors & Controls	Audio Mini jack x1 / DC x1; 5 OSD buttons(optional)
Power	Supply / Consumption: 100-240 VAC / 24VDC +/- 5%; 9-960W typical, 1.2W sleep, 0.5W off
Mechanical	Outline Dimensions(WxHxD) / Weight (Unpacked/Packed): Subject to change Box Dimensions: N/A / Mounting: Kits Form, Open Frame Form

Environmental Operating / Storage Temperature: -10°C to 50°C / -20°C to 60°C

Accessories LCD controller & constant current boards, power supply, **ambient light sensor** & panel cable

Others MTBF/Warranty/Metal Case/Ready for Use: 50,000 hours demonstrated /1-year / silver / 24/7

TDD-OFTD-OB(SP)xxxH | BTTD|FALD|SPTD-xxx(U)H / 10.1-65" High Brightness TFT Displays



High Brightness Bar Type



Full Array Local Dimming

Optical Bonding with Tempered Glass High Brightness Splicing

Solar Powered | Ultra High Brightness

Overview

Designed especially for outdoor application, the **TDD High Brightness TFT Displays** include **10.1 to 86 inch, Open Frame, Optical Bonding, Solar Powered, Bar Type, Full Array Local Dimming, Ultra & Custom High Brightness Displays** types, ensuring excellent visibility in direct sunlight. Custom backlight solution & advanced brightness sensor allow for automatic adjustments based on ambient light, optimizing readability and energy efficiency, ensuring the clear visibility at all times and extending the lifespan of the displays – making it the ideal solution for the bright environments.

Features(with Durable Metal Case for Accessories)

- 1000 up to 5000 nits, Sunlight Readable, Wide Operating Temperature
- 24/7 IPS Panel with Industrial Grade LED Backlights (analog / PWM Dimming Control)
- Available in Kits Form, Open Frame, Waterproof Optical Bonding Tempered Glass and Fully Custom Design

Specifications

Panel

LCD Type	TFT / IPS / Transmissive / Normally Black
Diagonal Size	10.1-65"(4:3 / 16:9 / 16:10), 25.65 – 165.1cm, Active matrix TFT LCD (WLED)
Active Area (mm)	216.96 mm x 135.6 mm - 1428.48 mm x 803.52 mm
Pixel Pitch (H x V)	0.1695 x 0.1695 mm - 0.372 x 0.372 mm
Resolution / Contrast	1920 x 1080 / 3840 x 2160 / 1200:1
Viewing Angle	Horizontal: 89° or 178° total / Vertical: 89° or 178° (Typ.)(CR≥10)
Number of Color/Bright	16.7 million / 1000 - 5000 nits
Response	8 - 30 (Typ.)(Tr+Td) ms
Input Video Frequency	Horizontal: 30 - 60 KHz / Vertical: 50 - 75 Hz
Interface/Supply Volt.	LVDS 20-51 pins / 12V (Typ.)

PCAP Touch Panel **None**

LCD Controller (A/D) Board

Video Interfaces	Default: 1*VGA, 1*HDMI for 1K, 2*HDMI for 4K; Optional: DVI x1, Display Port x1
Connectors & Controls	Audio Mini jack x1 / DC x1; 5 OSD buttons(optional)
Power	Supply / Consumption: 100-240 VAC / 24VDC +/- 5%; 9-960W typical, 1.2W sleep, 0.5W off
Mechanical	Outline Dimensions(WxHxD) / Weight (Unpacked/Packed): Subject to change Box Dimension: N/A / Mounting: Kits Open Frame Form/Optical Bond w/ Tempered Glass

Environmental	Operating / Storage Temperature: -10°C to 50°C / -20°C to 60°C
Accessories	LCD controller & constant current boards, power supply, ambient light sensor & panel cable

Others MTBF/Warranty/Metal Case/Ready for Use: 50,000 hours demonstrated /1-year / silver / 24/7



Features

- Integrated with Intel® J1900 / J4125 Quad Core 2.0 / 2.7GHz / Intel® Core™ i3 / i5 / i7 / i9 4-13th G
- Small size & light weight with mounting racks, easy for installation
- Supports DDR4 ECC 2133/2400MHz, up to 64G
- Supports onboard eMMC and 1x 2.5 inch storage
- Supports 1*HDMI, 1*VGA dual display
- Supports 2*LAN, 8*USB
- Wide range DC 9~36V Input (optional)
- High-quality pure aluminum fanless case

Overview

The TDD Industrial Box PCs include **Windows** and **Android** types, deliver a great computing solution when your application requires the PCs to be integrated into equipment. It can withstand harsh industrial environment with multiple I/O & expansion slots, rugged internal components & fanless cooling systems. Powered by Android or Intel with heavy-duty aluminum or steel enclosure, high durability & versatility for Kiosks applications from Self-service, Automated Parking, Industrial Automation, Outdoor Control, Healthcare to Gaming.

Specifications

Case Color	Black(color can be customized)	
Material	Aluminum Alloy	
CPU	Intel® J1900 / J4125 Quad Core 2.0 / 2.7GHz / Intel® Core™ i3 / i5 / i7 / i9 4-13 th G	
Chipset	Adopt Intel express chipset	
RAM	2xSODIMM DDR4 2133/2400MHz Memory slots, up to 64GB	
Storage	1*MSATA, 1*M.2	
Audio	Integrated Realtek ALC662/660/892/887 6 sound channel, support MIC line-out	
Display Interface	1*VGA, 1*HDMI / 2*HDMI / 2*HDMI & 1*VGA triple display(optional)	
Display	Integrated Intel HD Graphic card, support 1*VGA, 1*HD, 1*LVDS display input	
I/O	USB	6*USB2.0/3.0(optional for 4/8/10)
	COM	6*COM(RS232/485), optional for 2 / 4
	Line In/Out	1
	LAN	1(optional for 2)
	WIFI Antenna	Optional
	MIC / Audio	1 / 1
	GPIO / LPT	Optional
Network Card	1*RTL8111H 1000M(optional for Intel) lan, support wake on lan	
Expansion	2*mini-PCIE, support Wifi/3G/4G/5G module	
Watch Dog Timer	Support	
Power	Supply / Consumption: 100-240 VAC / 12VDC(optional for 9-36V) +/- 5%; 35W	
Operating System	Windows /7/8/10, Linux	
BIOS	AMI BIOS, ACPI supported	
Working Temperature	-20°C - 60°C	
Working Humidity	0% - 95% relative humidity, non-condensing	
Mechanical	Product Dimensions / Weight (Unpacked/Packed): Subject to change Box Dimensions: Subject to change / VESA Mounting bracket, DIN rail(optional)	
Others	MTBF/Warranty/Enclosure Color: 50,000 hours demonstrated / 1-year / black silver Ready for Use: 24/7	

Default Interface

1 xLAN: USB2.0 x6 / USB3.0 x2 / COM x6 / VGA x1 / HDMI x1 / LAN x1 / WIFI x1 / DC x1 / Audio x1 / Mic x1
2 xLAN: USB2.0 x4 / USB3.0 x2 / COM x6 / VGA x1 / HDMI x1 / LAN x2 / WIFI x1 / DC x1 / Audio x1 / Mic x1



Features

- Integrated with Rockchip **RK3566/3568/3288/3399** Quad-core **Cortex-A55/17/17/72 1.8/2.0/1.8/1.8GHz**
- Fanless, small form factor, VESA-ready
- 1/2(std)/4/8/16GB RAM, 4/8/16(std)/32/64/128GB eMMC Flash, expandable via TF card(up to 256G)
- Supports 1*HDMI, 1*VGA dual display (optional)
- Supports 1/2*LAN, 4/6*USB
- Internet, WIFI, BT, 4G (optiona), Headphone, MIC
- Wide range DC 9~36V Input (optional)
- High-quality steel / **pure aluminum** fanless case

Overview

The **TDD Industrial Box PCs** include **Windows** and **Android** types, deliver a great computing solution when your application requires the PCs to be integrated into equipment. It can withstand harsh industrial environment with multiple I/O & expansion slots, rugged internal components & fanless cooling systems. Powered by Android or Intel with heavy-duty aluminum or steel enclosure, high durability & versatility for Kiosks applications from Self-service, Automated Parking, Industrial Automation, Outdoor Control, Healthcare to Gaming.

Specifications

Case Color	Black(color can be customized)	
Material	Aluminum	
CPU	RK3566/3568/3288/3399	
Chipset	Quad-core Cortex-A55/17/17/72 1.8/2.0/1.8/1.8GHz	
RAM	1 / 2(std) / 4/ 8 / 16GB	
Storage	4 / 8 / 16(std) / 32 /64 / 128GB	
KIO	6-way GPIO(optional)	
Display Interface	1*HDMI	
Display	1920*1080(HDMI 1.4) / 4K (HDMI 2.0)	
I/O	USB Host / OTG	4*USB2.0 & 2*USB3.0 / 1-way MicroUSB OTG
	COM	2*COM(2*RS232 / 2*RS485)
	TF / SIM Card	1, up to 128G / 1, 1-way Nano-SIM
	LAN	1, 1-way 10/100/1000Mbps
	WIFI Bluetooth	1, 802.11b/g/n 1, V5.2
	Headphone/Audio	1 way left & right channel
	GPIO / LPT	Optional
Network Card	1*RTL8111H 1000M(optional for Intel) lan, support wake on lan	
Expansion	1*4G, 1-way PCIe expansion	
Accessories	HOST x1, WIFI ANT x1, Hanging ears x1, Power Adapter x1, HDMI HD Cable x1	
Power	100-240 VAC/9-15VDC; 2.25W typical, 0.42W standby, 12W Max	
Operating System	Android (11), Linux	
Button	Reboot	
Working Temperature	-20°C - 70°C	
Working Humidity	0% - 95% relative humidity, non-condensing	
Mechanical	Product Dimensions / Weight (Unpacked/Packed): Subject to change Box Dimensions: Subject to change / VESA Mounting bracket, DIN rail(optional)	
Others	MTBF/Warranty/Enclosure Color: 50,000 hours demonstrated / 1-year / black silver Ready for Use: 24/7	

Default Interface

1 xLAN: USB2.0 x4 / USB3.0 x2 / COM x2(2*RS232 / 2*RS485) / HDMI x1 / LAN x1 / WIFI x1 / DC x1 / TF-CARD x1 / Audio x1

2 xLAN: USB x6 / COM x2(RS232 x2/RS485 x2) / HDMI x1 / LAN x2 / WIFI x1 / DC x1 / TF-CARD x1 / Audio x1

TDD-CP-HTDxxx

4.3-10.1" HDMI TFT Displays

Custom Products



Overview

TDD's HDMI TFT Displays simplify the integration of displays into project designs by using standard HDMI connections. Available in 1.44", 2.4", 2.8", 3.5", 4.3", 5", 7", 8" and 10.1" sizes, these modules feature MVA technology, with options for capacitive, resistive, or no touch panels. The non-touch panel version connects with just two wires - DC power and HDMI. The touch panel version needs one extra USB connection to enable touch features via USB-HID. With 500 nits to 1000 nits high-brightness IPS display & wide operating temperatures, making it the idea solution for various applications.

Features

- 500 - 1000 nits, Sunlight Readable (**optional**), Wide Operating Temperature
- 24/7 IPS Panel with Industrial Grade LED Backlights
- Available in Kits Form, air bonding or optical bonding with PCAP Touch (**optional**)

Specifications

Panel

LCD Type	TFT / IPS / Transmissive / Normally Black
Diagonal Size	4.3"-10.1"(16:9/16:10), 10.922-25.65cm, Active matrix TFT LCD (WLED)
Active Area (mm)	95.04 mm x 53.858 mm - 222.72 mm x 125.28 mm
Pixel Pitch (H x V)	0.1695 x 0.1695 mm - 0.198 x 0.198 mm
Resolution	800 x 480 / 1024 x 600
Viewing Angle	Horizontal: 85° or 170° total / Vertical: 85° or 170° (Typ.)(CR ≥ 10)
Number of Colors	16.7 million
Brightness (typical)	500 nits – 1000nits
Response Time-total	20 - 30 (Typ.)(Tr+Td) ms
Contrast Ratio	900:1 – 1200:1
Input Video Frequency	Horizontal: 30 - 60 KHz / Vertical: 50 - 75 Hz
Interface	LVDS 20 - 40 pins
Supply Voltage	3.3V (Typ.)

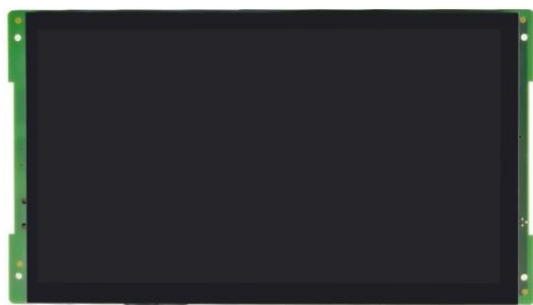
PCAP Touch Panel **Optional**

LCD Controller (A/D) Board

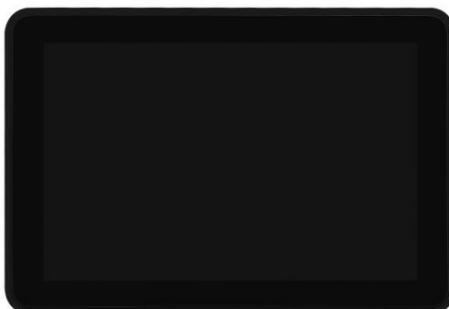
Video Interfaces	Default: <7": 1*HDMI, >=7": 1*VGA, 1*HDMI; Optional: DVI x1, Display Port x1
Connectors & Controls	Audio Mini jack x1 / DC x1; 5 OSD buttons(optional)
Power	Supply / Consumption: 100-240 VAC / 12VDC +/- 5%; 4-9W typical, 1.2W sleep, 0.5W off
Mechanical	Outline Dimensions(WxHxD) / Weight (Unpacked/Packed): Subject to change Box Dimensions: N/A / Mounting: Kits Form/Air Optical bonding w/ PCAP Touch (option)
Environmental	Operating / Storage Temperature: -20°C to 70°C / -30°C to 80°C
Accessories	LCD controller board kits, power supply & panel cable

Others

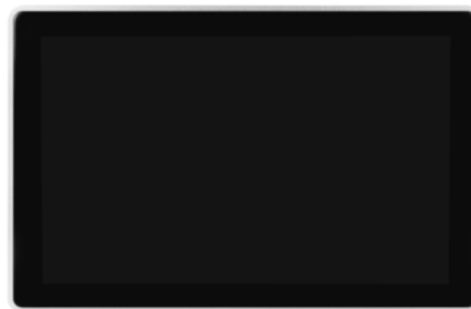
MTBF / Warranty / Ready for Use: 50,000 hours demonstrated / 1-year / 24/7



Open Frame (Without Case)



Rear Mount



Panel Mount (Aluminum Frame)

Overview

The **TDD Smart Central Control Systems** include **Open Frame** (without enclosure), **Bezel-free** (back mount) and **Panel Mount** (front mount) with metal / aluminum enclosure designs for seamless integration, deliver a great computing solution when your application requires the systems to be integrated into equipment. It can withstand harsh industrial environment with multiple I/O & expansion slots, rugged internal components & fanless cooling systems. With IP65 (front) rating for protection in enclosures, connectivity includes Ethernet, USB, and optional serial ports. Compatible with Android 7.1 - 12, Linux QT, Ubuntu & Debian, it's ideal for automation, smart system, and IoT applications require an adaptable form factor.

Features

- Touch thru glass enabled with PCAP supports thickness up to 5mm
- Open frame design **without Enclosure**
- IP65 (front) for water and dust protection, flexible mounting in any table, kiosk, or cabinet design

Specifications

System

Processor	Android: RK3288/RK3566 A133P /RK3568 Quad-core Cortex-A17/ A53 /A55 1.6/1.8/ 2.0GHz
Memory(RAM)	Android: 1(std) / 2 / 4 / 8 / 16GB
Storage	Android: 4/8(std) /16/32/64GB eMMC Flash

Panel

Size / Active Area (mm)	4.3-10.1"(16:10), 10.922-25.65cm, Active matrix TFT LCD/154.2144x85.92 -216.96x135.6mm
Resolution / Contrast	800 x 480-1280 x 800 / 1000:1
Viewing Angle	Horizontal: 75-80° or 150-160° total / Vertical: 70-80° or 140-160° total
Color Depth/Brightness	16.7 million / 500 nits (optional for 600 / 1000 nits)
Response Time / Freq	10 - 30 (Typ.)(Tr/Td) ms / Horizontal: 30 - 60 KHz / Vertical: 50 - 75 Hz

Touch

Touch Technology / OS	PCAP (Projected Capacitive) - 10 Touch Capacity / Windows / Android / Linux / Mac
Surface Treatment	Water, Dust & Vandal proof; Optional: Anti-glare, Anti-fingerprint, Anti-smudge, Anti-bacterial

I / O Ports

Android	USB2.0 x1 / USB OTG x1 / COM x2(TTL/RS232/RS485) / LAN x1 / WIFI x1 / DC x1 / TF or SIM CARD x1 / Audio x1 / GPIO x1; Optional for 4G(with GPS) / 5G / POE
---------	---

Power

Supply / Consumption: 100-240 VAC / 12VDC +/- 5%; 3-3.26W typical, 1.2W sleep, 0.5W off

Mechanical

Product Dimensions / Weight (Unpacked / Packed): Subject to change
 Box Dimensions: N/A / VESA Mounting(**Open Frame/w/ Case**): 120.3 x 248.3 / 75 x 75mm

Environmental

Operating / Storage Temperature: -10°C to 60°C / -20°C to 70°C

Accessories

Power adapter / cable, 4 clips (**no speaker, PoE module & expansion board**)

Others

MTBF / Warranty / Enclosure Color: 50,000 hours demonstrated / 1-year / black | silver
 Ready for Use: 24/7 **Remark:** Each unit with up to 1-2 "phoenix terminal to DC round head female socket" and 1-2 debugging cables (USB plug to USB male, or Type-C to USB male)

TDD-TPC-PMxxxMES

10.1-21.5" Panel Mount (Front Mount) **MES** PCAP Touch Panel PCs



Overview

The **TDD MES Touch Panel PCs** are robust industrial devices designed for harsh environments. Available in 10.1 to 21.5", they featured an integrated die-casting design and a custom motherboard for low power consumption and 24/7 stable operation. These PCs support various upgradeable interfaces, including RS485/422, GPIO, and aviation power interfaces. They are equipped with NFC, high-precision QR code reader, and optional functions like fingerprint scanning and metal keypads. With explosion-proof, dustproof and waterproof (front) capabilities, along with an automatic brightness adjustment feature, they are ideal for real-time identity authentication and permission monitoring in digital factories.

Features

- Touch thru glass enabled with PCAP supports thickness up to 5mm
- Embedded design with **Light Aluminum Frame & Steel Back**
- IP65 (front) for water and dust protection, flexible mounting in any table, kiosk, or cabinet design

Specifications (A = Aluminum Back, S = Steel Back in following "Mechanical")

System

Processor	Android: RK3188/RK3288/RK3566/RK3568 Quad-core Cortex-A9/A17/A55 1.6/1.8/ 2.0GHz Windows: Intel® J1900 / J4125 Quad Core 2.0 / 2.7GHz / Intel® Core™ i3 / i5 / i7 / i9 4-13 th G
Memory(RAM)	Android: 1 / 2GB(std) / 4 / 8 / 16GB; Windows: DDR3/4 2 / 4(std) / 8 / 16 / 32 / 64GB
Storage	Android: 4/8/ 16(std) /32/64GB eMMC Flash; Windows: 32/64(std)/128/256/512GB SSD/HDD

Panel

Size / Active Area (mm)	10.1-21.5"(4:3/16:9/16:10), 25.65-55cm, Active matrix TFT LCD (LED) / 216.96mmx135.6mm
Resolution / Contrast	800 x 600 / 1024 x 600 / 1024 x 768 / 1280 x 800 / 1280 x 1024 / 1920 x 1080 / 500:1-1200:1
Viewing Angle	Horizontal: 85° / 89° or 170° / 178° total / Vertical: 80° / 89° or 160° / 178° total
Color Depth/Brightness	16.7 million / 250-350 nits
Response Time / Freq	8 - 30 (Typ.)(Tr+Td) ms / Horizontal: 30 - 60 KHz / Vertical: 50 - 75 Hz

Touch

Touch Technology / OS	PCAP (Projected Capacitive) - 10 Touch Capacity / Windows / Android / Linux / Mac
Surface Treatment	Water, Dust & Vandal proof; Optional: Anti-glare, Anti-fingerprint, Anti-smudge, Anti-bacterial

I / O Ports

Android	USB x4 / COM x2 / HDMI x1 / LAN x1 / WIFI x1 / DC x1 / TF-CARD x1 / Audio x1
Windows	USB x4 / COM x2 / VGA x1 / HDMI x1 / LAN x1 / WIFI x1 / DC x1 / Audio x1 / Mic x1

Power

Supply / Consumption: 100-240 VAC/12VDC 5A +/- 5%; 20-25W typical, 1.2W sleep, 0.5W off

Mechanical

Product Dimension / Weight (Unpacked / Packed) / Box Dimensions: Subject to change
VESA Mounting: 75 x 75 / 100 x 100mm

Environmental

Operating / Storage Temperature: -10°C to 50°C / -20°C to 60°C

Accessories

Power adapter / cable, panel mount w/screws (opt.)

Others

MTBF / Warranty / Enclosure Color / Ready for Use: 50,000 hours / 1-year / silver / 24/7
Optional: HF RFID (13.56Mhz), Fingerprint, Barcode Reader, Pin Pad and Camera

TDD-CP-SOKxxxM/KCA/B | E
21.5-23.8" Slim / Sleek Curved | Easy Self-Ordering Kiosks



Overview

The **TDD Self Ordering Kiosks** include **Slim Curved, Sleek Curved, Slim, Easy** and **Android Self-checkout** types, which are designed to adapt to changing consumer demands in retail environments. These modular and reliable kiosks support self-ordering, self-checkout, and visitor check-in, empowering customers to control their experience. Equipped with Receipt Printer, high-precision QR Code reader, ID Camera and optional functions like RFID, Fingerprint scanning, Metal keypads, Bill & Coin Recycler (Custom) and **TDD's** innovative technology, it is the perfect solution for seamlessly integrating modern businesses to these user-friendly kiosks to enhance customer satisfaction and operational efficiency.

Features

- Compact design for space-restricted environments
- Robust construction ensures continuous use in unattended areas.
- Modular design minimizes total cost of ownership while maximizing operational efficiency.

Specifications

System (3.5 / 6.7" Motherboard: 146 x102 / 170 x170mm)

Processor	Android: RK3188/RK3288/RK3566/ RK3568 Quad-core Cortex-A9/A17/A55 1.6/1.8/ 2.0GHz Windows: Intel® J1900 / J4125 Quad Core 2.0 / 2.7GHz / Intel® Core™ i3 / i5 / i7 / i9 4-13 th G
Memory(RAM)	Android: 1 / 2GB(std) / 4 / 8 / 16GB; Windows: DDR3/4 2 / 4(std) / 8 / 16 / 32 / 64GB
Storage	Android: 4/8/ 16(std) /32/64GB eMMC Flash; Windows: 32/64(std)/128/256/512GB SSD/HDD

Panel (Non-LED | LED Framed, C curved, Aluminum | Steel Frame, Curvature: R1500)

Size / Active Area (mm)	21.5-23.8"(16:9), 55-60.5cm, Active matrix TFT LCD (LED) / 478-527 mm x 269-296 mm
Resolution / Contrast	1920 x 1080 / 3000:1
Viewing Angle	Horizontal: 89° or 178° total / Vertical: 89° or 178° total
Color Depth/Brightness	16.7 million / 350 nits
Response Time / Freq	10 (Typ.)(Tr+Td) ms / Horizontal: 30 - 60 KHz / Vertical: 50 - 75 Hz

Touch

Touch Technology / OS	PCAP (Projected Capacitive) - 10 Touch Capacity / Windows / Android / Linux / Mac
Surface Treatment	Water, Dust & Vandal proof; Optional: Anti-glare, Anti-fingerprint, Anti-smudge, Anti-bacterial

I / O Ports

Android	USB x2 / HDMI x1 / LAN x1 / WIFI x1 / DC x1 / TF-CARD x1 / Audio x1
Windows	USB x4 / COM x2 / VGA x1 / HDMI x1 / LAN x1 / WIFI x1 / DC x1 / Audio x1 / Mic x1

Power

Supply / Consumption: 100-240 VAC / 12VDC 5A +/- 5%; 25W typical, 1.2W sleep, 0.5W off

Mechanical

Product / Box Dimensions (HxWxD), Weight(Unpacked/Packed), VESA Mounting: N/A kg

Environmental

Operating / Storage Temperature: -10°C to 50°C / -20°C to 60°C

Accessories

Power adapter / cable, free standing / wall mount mounting kits w/screws (opt.), **Speakers**

Others

MTBF / Warranty / Enclosure Color / Ready for Use: 50,000 hours / 1-year / white|black / 24/7

Optional Peripherals

(Default: Marked by Yellow)

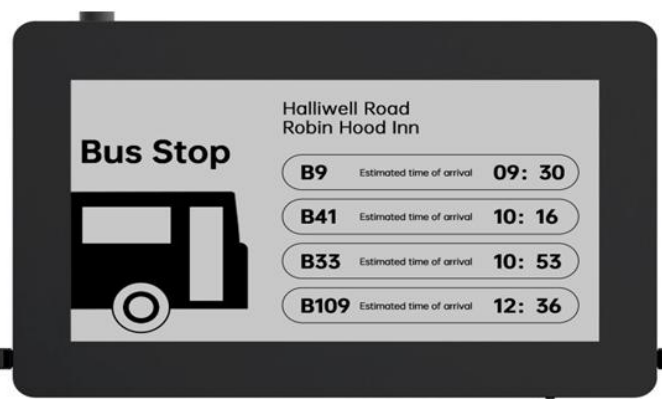
Receipt Printer: thermal, 150mm/s, 80mm printing width, auto cut, paper end detection, USB
QR / Barcode Scanner: 1D / 2D, CMOS with **640 x 480 (opt. for 752 x 480)** pixel, USB
ID Camera: 2 / 5MP , monocular / **binocular** cameras, USB
POS Holer: Yes **RFID: Custom**, 13.56M Hz Mifare ISO14443A read only, USB
Fingerprint Scanner: Custom, USB **Metal Keypad: Custom**, 16 keys, USB
4G: Mini-PCle, GPS: TTL / USB or 4G & GPS: Mini-PCle
Mixed Banknote / Bill Recycler: ITL SP3(Spectral Payout), **single note** insert, mixed denomination (up to 85mm), 80 mixed notes recycler capacity, 1000 notes cashbox, SSP/232
Coin Recycler: ITL SCS, bulk coin feeder, hopper and recycler, up to 11 denominations (dia: 16 - 28.5mm, thk: 1.65 - 3.2mm), 1400 (€1) or 1050 (£1) or 1500 (quarters), SSP, USB
Multi Bill Banknote / Bill Recycler: Custom, ITL NV4000, **BNF** insert up to **30 bills**, dispense up to 680 bills of 5 denominations (up to 85mm), 70 x 4 (280) recycler modules capacity, 1000 notes cashbox capacity, SSP
Banknote/Coin Validator: single note/coin insert, mixed denomination, 1000 notes cashbox
ID Camera: 2 / 5MP , monocular / **binocular** cameras, USB
RFID: Custom, 13.56M Hz Mifare ISO14443A read only, USB



TDD-CP-SOK101CK - 10.1" Android Self-checkout Kiosks



TDD-ODS-xxxH 49-55" High Brightness Outdoor Digital Signage (Displays)
TDD-EDP-xxx 13.3-32" High Brightness Outdoor E-paper Displays



Overview

The **TDD Outdoor Digital Signage** solution is designed for outdoor use, featuring a remarkable brightness of 2000 nits to 5,000 nits for clear visibility in direct sunlight. Its slim and lightweight design is paired with robust protection, offering an IP56 rating for weather resistance and IK10 certification for impact durability. This versatility makes it ideal for applications like outdoor menu boards, kiosks, and advertising displays. Supporting both portrait and landscape orientations, the **TDD-ODS Series** includes multiple connectivity options such as HDMI and USB, along with web-based remote monitoring, ensuring seamless control and management for effective digital communication in various outdoor environment projects.

Features

- **High Brightness:** Delivers an impressive up to 5000 nits for exceptional visibility in direct sunlight.
- **Durable Design:** Features IP56 weather resistance and IK10 impact protection, ensuring reliable outdoor performance.
- **Versatile Connectivity:** Multiple **M12 Metal I/O Connectors**, flexible mounting in any table, kiosk or cabinet control.

Specifications

System

Processor	Android: RK3188/RK3288/RK3566/ RK3568 Quad-core Cortex-A9/A17/ A55 1.6/1.8/ 2.0GHz Windows: Intel® J1900 / J4125 Quad Core 2.0 / 2.7GHz / Intel® Core™ i3 / i5 / i7 / i9 4-13 th G
Memory(RAM)	Android: 1 / 2GB(std) / 4 / 8 / 16GB; Windows: DDR3/4 2 / 4(std) / 8 / 16 / 32 / 64GB
Storage	Android: 4/8/ 16(std) /32/64GB eMMC Flash; Windows: 32/ 64(std) /128/256/512GB SSD/HDD

Panel

Size / Active Area (mm)	13.3-55"(16:9), 33.782-139.7cm, Active matrix TFT LCD / 270.4 x 202.8-1209.6 x 680.4 mm
Resolution / Contrast	1920 x 1080 / 1200:1 1600 x 1200-3840 x 1080 (TDD-EDP)
Viewing Angle	Horizontal: 89° or 178° total / Vertical: 89° or 178° total
Color Depth/Brightness	16.7 million / 2000 - 5000 nits Front light (TDD-EDP)
Response Time / Freq	8 (Typ.)(Tr+Td) ms / Horizontal: 30 - 60 KHz / Vertical: 50 - 75 Hz

Tempered Glass **3-6mm, Ultra Clear, Anti-mist Optical Bonding(ODS)**

Touch(None, option) PCAP (Projected Capacitive) - 10 Touch Capacity

Surface Treatment Water, Dust & Vandal proof; **Optional:** Anti-glare, Anti-fingerprint, Anti-smudge, Anti-bacterial

I / O Ports

Android | Windows USB x1 / HDMI x1 / LAN x1 / WIFI x1 / DC x1 / Audio x1 | N/A

Power Supply / Consumption: 100-240 VAC / 12VDC +/- 5%; 300-330W typical, 1.5W sleep, 0.5W off

Mechanical (Monitor) Product Dimensions / Weight (Unpacked / Packed): Subject
Box Dimensions: N/A / VESA Mounting: N/A

Environmental Operating / Storage Temperature: -30°C to 50°C

Accessories Power adapter / cable, wall mount brackets w/screws (opt.)

Others MTBF / Warranty / Enclosure Color: 50,000 hours demonstrated / 1-year / black | silver
Ready for Use: 24/7, **IP Rate: IP56, Direct Sunlight: Yes(ODS)**

* TDD (www.tddtouch.com, sales@tddtouch.com) reserves the right to change specifications without prior notice. **35**

Accessories – Stands, Mounts & Peripherals

Stands For Standard & Custom (Closed Frame Series) Touch Monitors (7-27")



Magnetic Stripe Readers



Touch Stylus

For Custom (Closed Frame Series) Touch Monitors (7-21.5")



Power Supply



For LED Framed Curved PCAP Touch Monitors (7-27")



Overview

TDD offers a wide range of quality accessories for Touch Monitors and panel PCs, it include table stands, floor strands and mounts with custom colors and sturdy & durable aluminum & steel construction, and peripherals (include Magnetic Strip Readers & Touch Stylus etc.) – making it the ideal solution for integrating the product free standing or in the wall.

Features

- Easy to install, supports in portrait or landscape orientation
- Powder-coated sturdy and durable whole steel construction
- Custom designed for wall, desktop, table and free standing mount type

Specifications

Placement Style	Wall / Desktop / Table / Free Standing Mount
Material Orientation	Steel / Aluminum Portrait, Landscape
Finishes & Colors	Powder-coated Silver, Black , or White (other custom colors available)
Compatibility	Screen size: 7" - 27" / Weight Supported: 30KG (Max)
VESA Size / Packing	75mm x 75mm 100mm x 100mm / Polyethylene Foam, Carton
Accessories	Screw Kits for Mounting, Allen Driver, Instructions

Note *Monitor Products not Included*

TDD GROUP LIMITED

Add: T2-B608, Shenzhen Software Park, No.22 Gaoxin South 7th Road, Nanshan District, Shenzhen 518057, China

Tel / Fax: +86-755-86724815

Email: sales@tddtouch.com

Contact: Thomas Hou

Mob / WhatsApp / Wechat: +86-15002067862

[Http://www.tddtouch.com](http://www.tddtouch.com)

